

CENSUS 2021 – Education Briefing

Contents

Introduction.....	1
Highest level of qualifications.....	2
Schoolchildren and full-time students.....	12
Sources and Links	15

Introduction

On Friday 10th January 2023, the Office for National Statistics (ONS) published its second phase outputs from the 2021 Census, which provides statistics on education for all local authority areas in England & Wales.

The key summary points are:

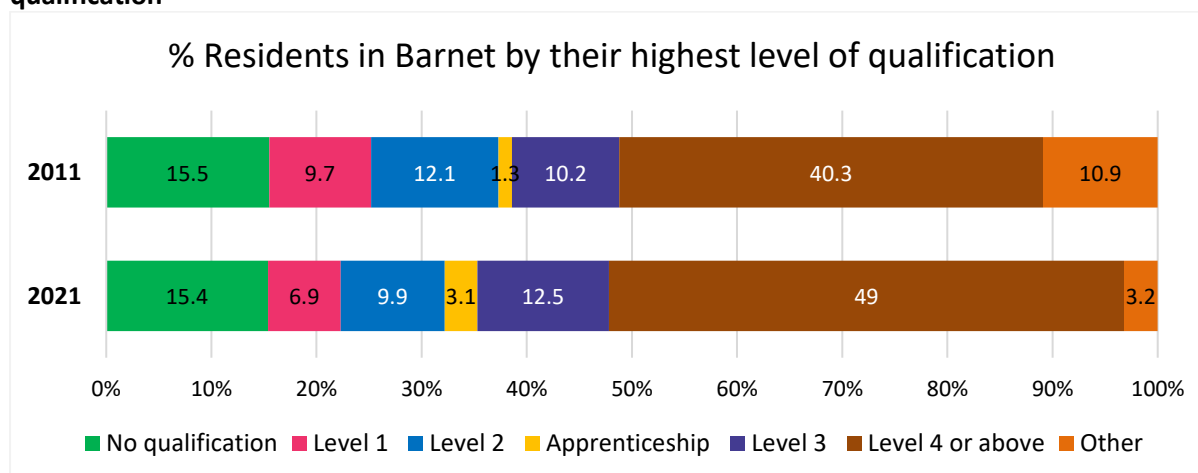
- ‘Level 4 qualification or above’ (49% in 2021) and ‘No qualification’ (15.4% in 2021) were the most common types of qualification level achieved by Barnet residents in both 2011 and 2021.
- From the 2011 to 2021 census, the number of Barnet residents with ‘Level 4 qualification or above’ increased by 33.2% and those with ‘No qualification’ increased by 9%.
- About 23% of Barnet residents aged 5 years and over are full-time students.

Highest level of qualification

In Census 2021, Barnet residents aged 16 years and over reported the academic, vocational, and professional qualifications that they had achieved, which were categorised as follows.

- No qualifications: no formal qualifications
- Level 1: 1~4 GCSE passes (grade A*~C or grade 4 and above) and any other GCSEs at other grades, or equivalent qualifications
- Level 2: 5 or more GCSE passes or equivalent qualifications
- Apprenticeships
- Level 3: 2 or more A levels or equivalent qualifications
- Level 4 or above: Higher National Certificate, Higher National Diploma, Bachelor's degree, or post-graduate qualifications
- Other qualifications, of unknown level

Chart 1: Census 2011 vs Census 2021 percentage of residents in Barnet by their highest level of qualification



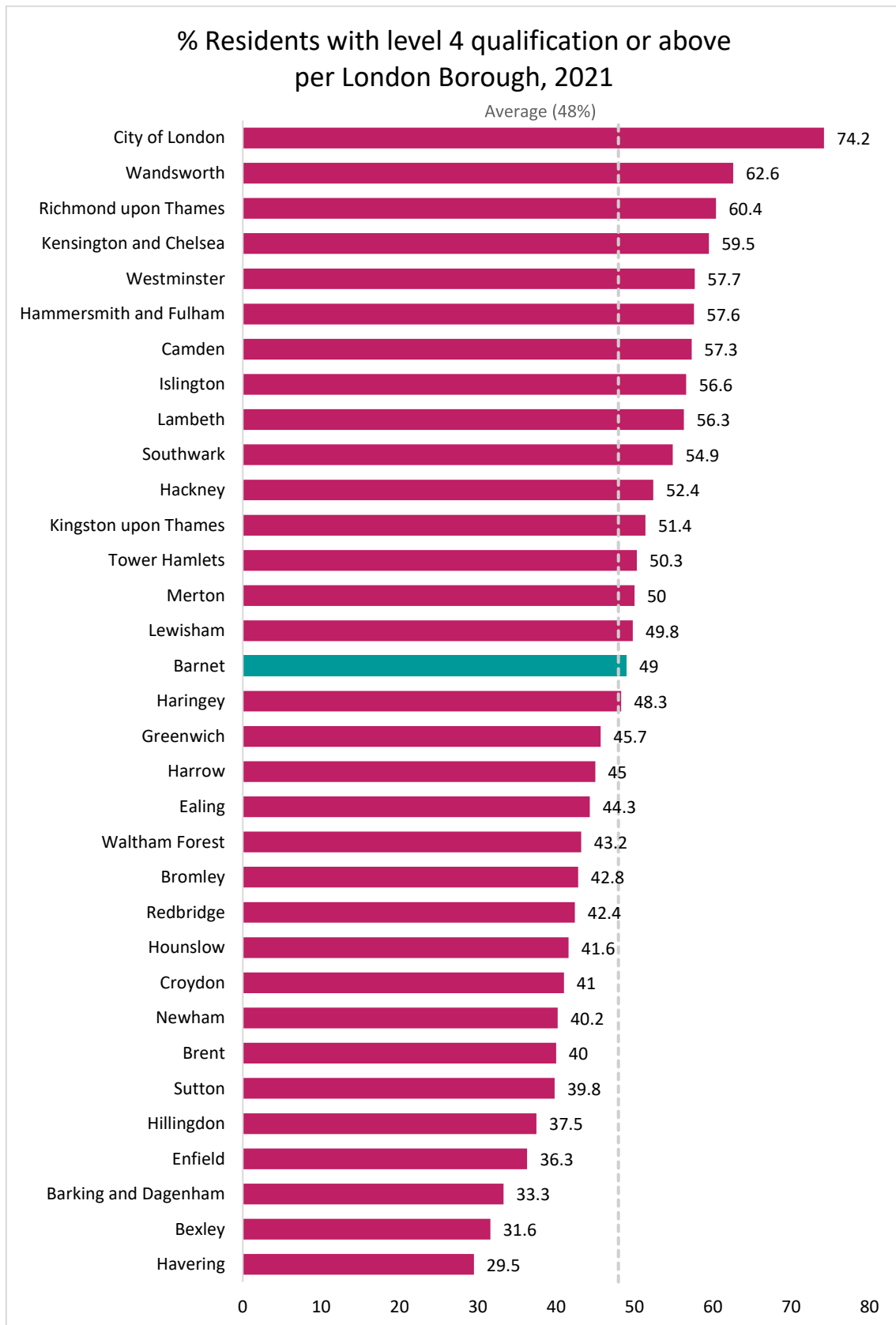
In both 2011 and 2021, the most common type of highest qualification achieved by residents in Barnet was level 4 or above with 49% of residents reporting this level of qualification. This represents an increase of 33% over the last decade of the number of residents with a level 4 qualification or above. In 2021, the percentage of residents in Barnet reporting a level 4 qualification or above, was similar to the London average (48%) and was about 15% higher than the England average (33.9%).

Holding no formal qualification continued to be the second most common category of qualification in Barnet in 2021. About 15% of the residents in Barnet had attained no qualification in 2021, which was similar to the London average (15.7%) and 3% lower than the England average (18.1%).

Table 1. Mean proportion of residents with each qualification in the Census 2021 – Barnet vs London vs England

Type of qualification	Barnet (2021)	London (2021)	England (2021)
No qualification	15.4%	15.7%	18.1%
Level 1	6.9%	7.4%	9.7%
Level 2	9.9%	9.8%	13.3%
Apprenticeship	3.1%	3.1%	5.3%
Level 3	12.5%	13.1%	16.9%
Level 4 or above	49.0%	48.0%	33.9%
Other	3.2%	3%	2.8%

Chart 2. Percentage of residents with level 4 qualification or above per London Borough from the Census 2021



For the proportion of residents with level 4 qualification or above, Barnet ranked 16th out of 33 London boroughs, closely following Lewisham (49.8%) and Merton (50%).

Chart 3. Percentage of residents with no qualification per London Borough from the Census 2021

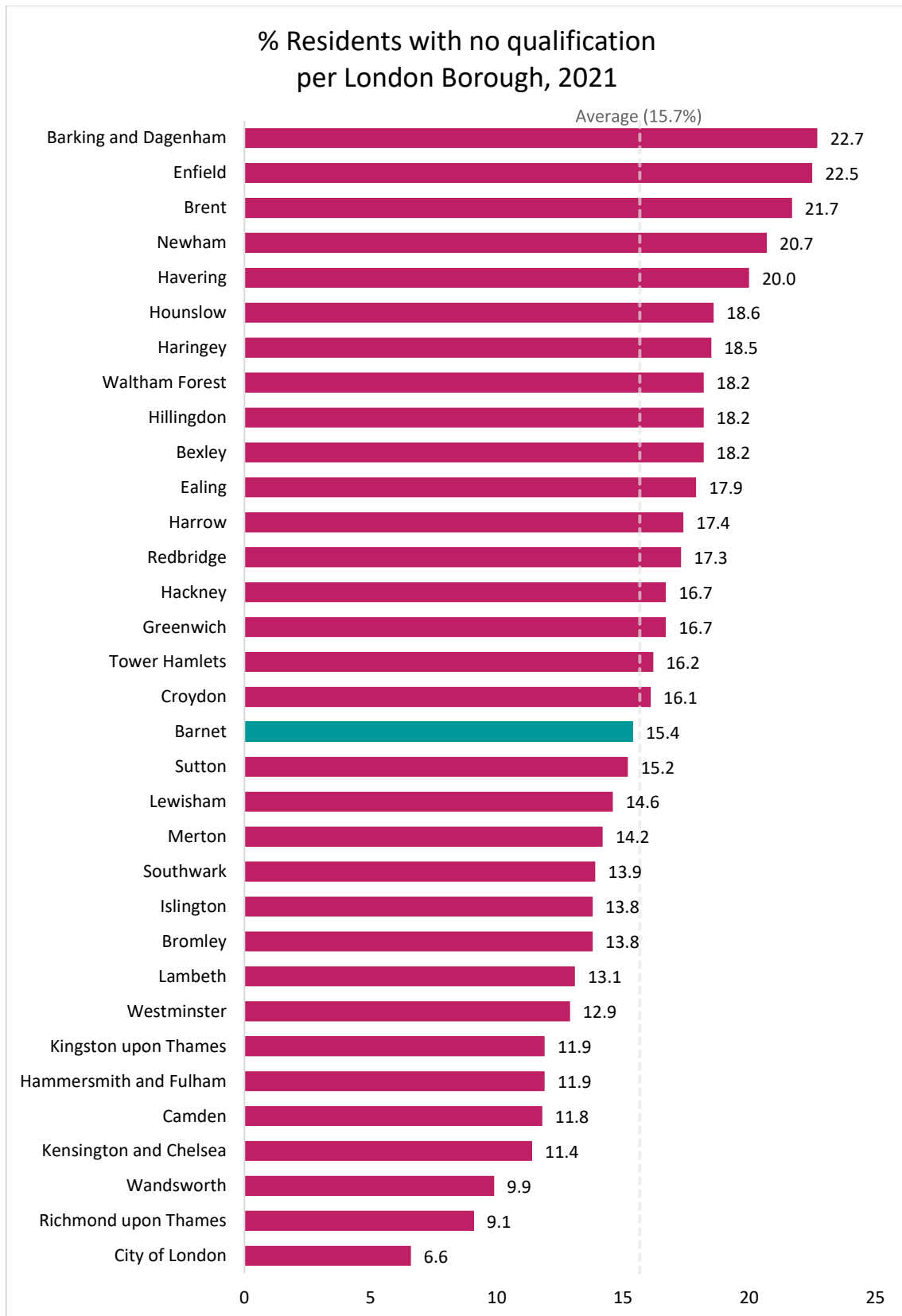


Table 3. Census 2011 vs Census 2021 Percentage of Barnet residents by their highest level of qualification

Qualification	2011		2021		Difference	Total % Difference ¹	Growth % ²
	Number	%	Number	%			
No qualification	43,833	15.5%	47,762	15.4%	3,929	-0.1%	9.0%
Level 1	27,240	9.7%	21,302	6.9%	-5,938	-2.8%	-21.8%
Level 2	34,028	12.1%	30,687	9.9%	-3,341	-2.2%	-9.8%
Apprenticeship	3,778	1.3%	9,630	3.1%	5,852	1.8%	154.9%
Level 3	28,742	10.2%	38,541	12.5%	9,799	2.3%	34.1%
Level 4 and above	113,815	40.3%	151,642	49.0%	37,827	8.7%	33.2%
Other	30,716	10.9%	9,790	3.2%	-20,926	-7.7%	-68.1%
Total	282,152	100.0%	309,354	100.0%	27,202	0.0%	9.6%

¹Total % Difference is the percentage difference between the 2011 and 2021 censuses for each category:

'Total % Difference' = '% 2021' - '% 2011'

²Growth % is the number difference the 2011 and 2021 censuses divided by the number from the 2011 census for each category: 'Growth %' = ('Number 2021' - 'Number 2011') / 'Number 2011' * 100

In Barnet, the qualification that showed the greatest growth from the 2011 to 2021 census was apprenticeship with an 150% increase, rising from 1.3% of residents in 2011 to 3.1% of residents in 2021. However, the number of residents with other qualifications, such as vocational or work-related qualification, dropped most over the last decade with a nearly 70% decrease, dropping from 10.9% of residents in 2011 to 3.2% of residents in 2021. .

From 2011 to 2021, residents in Barnet who had achieved level 4 qualification or above grew by 33.2%, which was 3.6% lower than the average growth in London (36.8%). This represents an increase from 40.3% of residents in 2011 to 49% of residents in 2021. Barnet was the 19th highest borough for the percentage increase in the residents with level 4 qualification or above over the last ten years.

Barnet was one of the 19 London boroughs that showed a growth in the residents with no formal qualification over the decade. Barnet was the 8th highest borough for the percentage increase in the number of residents with no formal qualification, recording a 9% growth, which was 9.4% higher than the London average (-0.4%). Despite the growth in the number of residents with no formal qualifications, the overall percentage of the population has remained stable with 15.5% of residents in 2011 reporting no formal qualification compared to 15.4% in 2021.

Chart 4: Percentage change in residents with level 4 qualification or above per London Borough from the Census 2011 to Census 2021

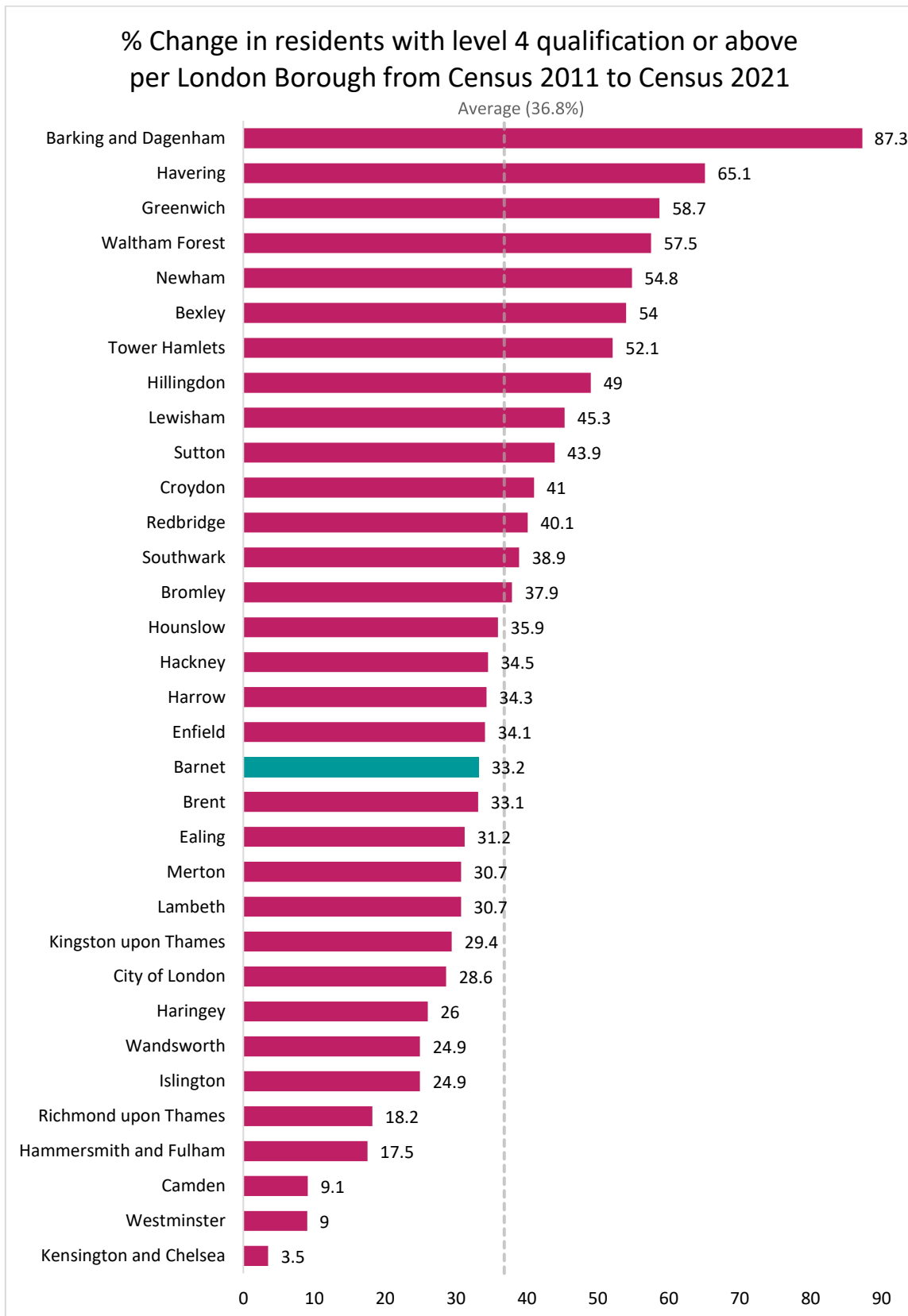


Chart 5: Percentage change in residents with no qualification per London Borough from the Census 2011 to Census 2021

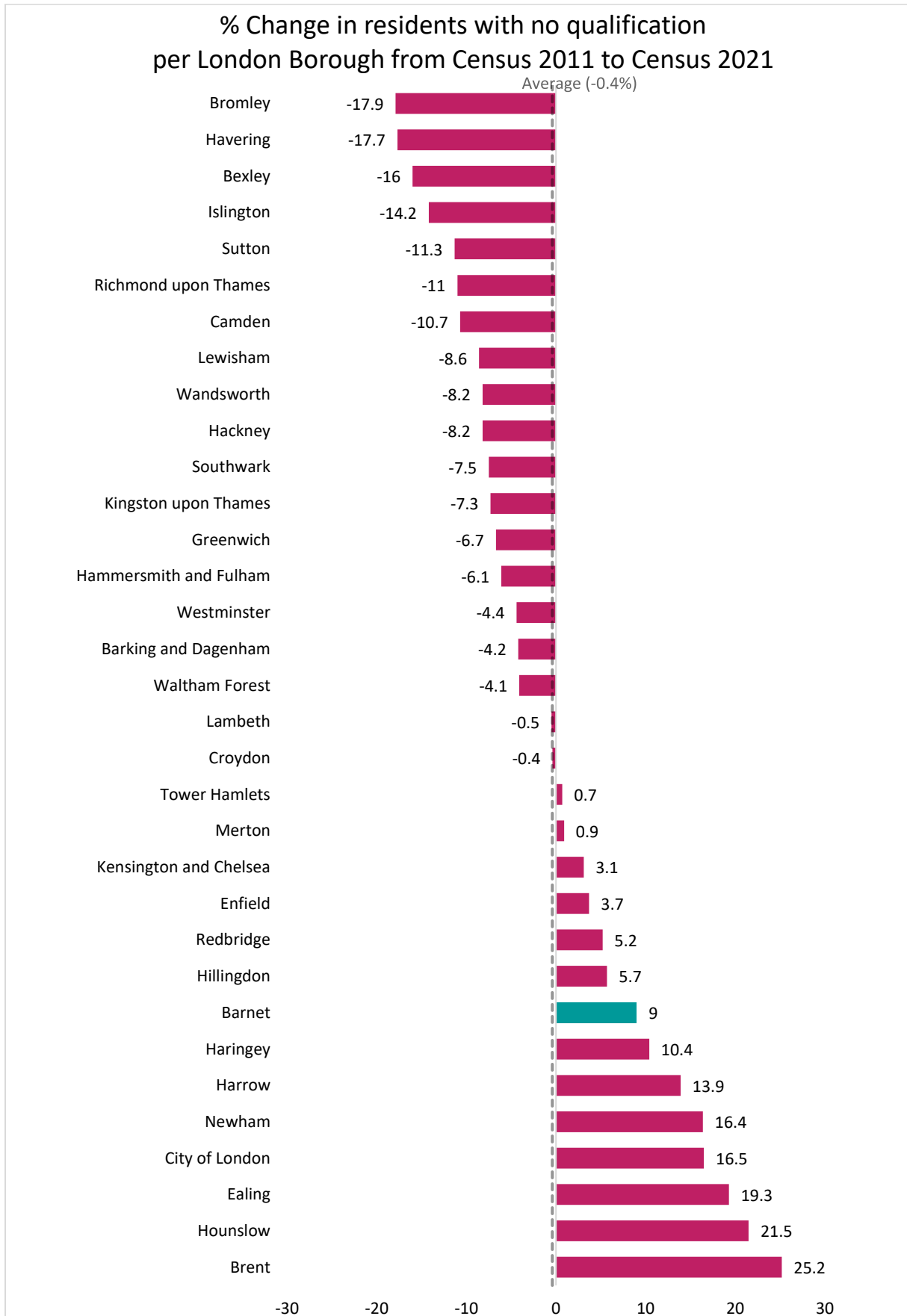
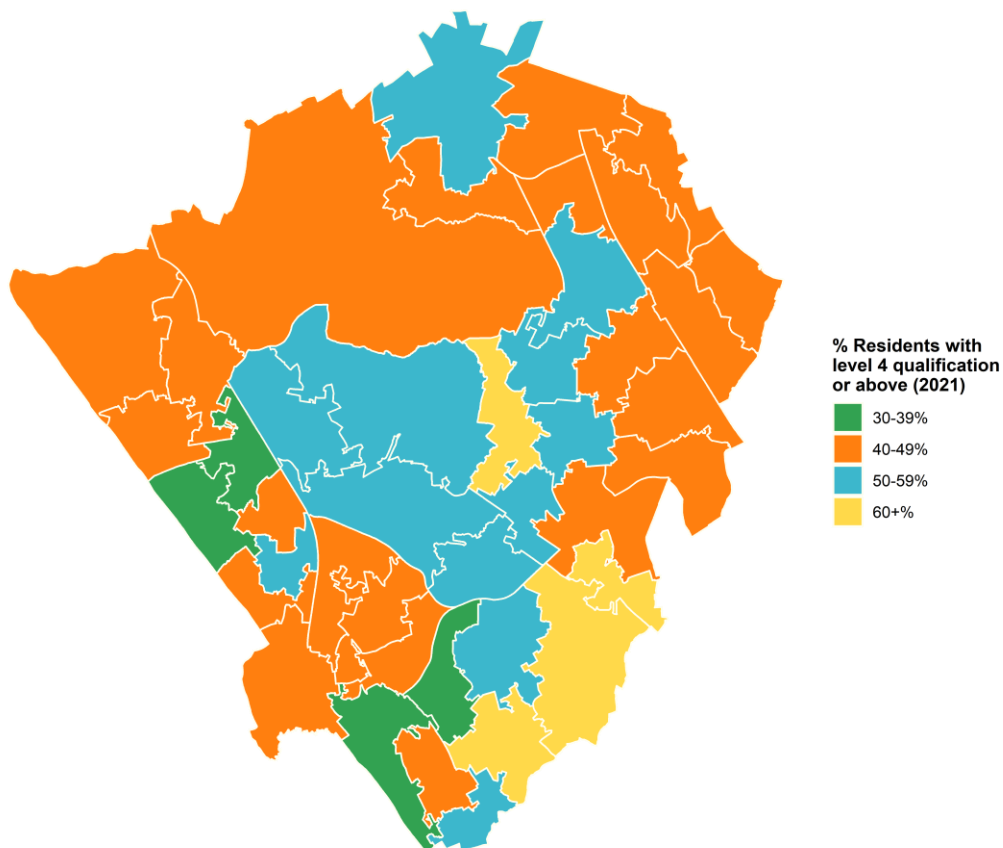


Table 4. Top 10 Barnet MSOAs with the highest percentage of residents with level 4 qualification or above in the 2021 Census

Rank	MSOA	% Residents with level 4 qualification or above (2021)
1	Hampstead Garden Suburb	64.4%
2	West Finchley	61.6%
3	East Finchley	61.2%
4	Golders Green South	60.7%
5	Church End	57.5%
6	Oakleigh Park	56.5%
7	Temple Fortune	55.9%
8	High Barnet & Hadley	55.8%
9	Woodside Park	55.5%
10	Finchley Central	55.5%

In 2021, Hampstead Garden Suburb had the highest proportion of residents with level 4 qualification or above. Nearly two thirds of residents in Hampstead Garden Suburb held a level 4 qualification or above, which corresponds to about 1.3 times higher than the Barnet average and London average. West Finchley and East Finchley followed Hampstead Garden Suburb with about 61% of the residents in each middle layer super output area (MSOA) having had achieved a level 4 qualification or above.

Figure 1. Map of Barnet residents with level 4 qualification or above in the 2021 Census



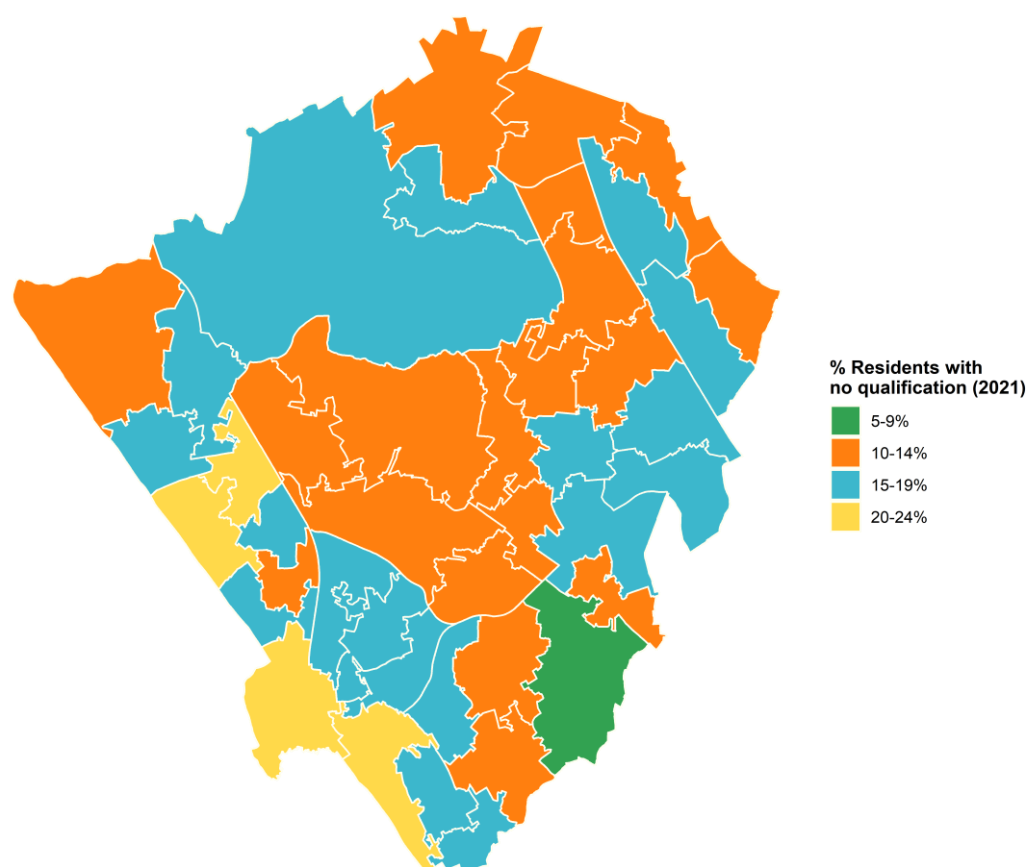
Source: Office for National Statistics licensed under the Open Government License v3.0
 Contains OS data © Crown copyright and database right 2023

Table 5. Top 10 Barnet MSOAs with the highest percentage of residents with no qualification in the 2021 Census

Rank	MSOA	% Residents with no qualification (2021)
1	Burnt Oak & Watling Park	24.0%
2	Brent Cross & Staples Corner	22.9%
3	West Hendon	20.9%
4	Mill Hill Broadway	20.3%
5	Edgware Central	19.3%
6	Grahame Park	19.2%
7	North Cricklewood	18.5%
8	Ducks Island & Underhill	18.3%
9	Golders Green North	17.3%
10	North Finchley	17.2%

In the 2021 Census, Burnt Oak & Watling Park had the highest prevalence of residents with no formal qualification (24%), which was about 1.5 times higher than the Barnet and London average. Brent Cross & Staples Corner (22.9%), West Hendon (20.9%), and Mill Hill Broadway (20.3%) followed Burnt Oak & Watling Park.

Figure 2. Map of Barnet residents with no qualification in the 2021 Census



Source: Office for National Statistics licensed under the Open Government License v3.0
Contains OS data © Crown copyright and database right 2023

Table 6. Top 10 Barnet MSOAs with the highest percentage change of residents with level 4 qualification or above from the 2011 Census to 2021 Census

Rank	MSOA	% Change in residents with level 4 qualification or above from 2011 to 2021
1	Colindale	218.4%
2	Grahame Park	120.8%
3	Mill Hill East	85.9%
4	West Hendon	62.5%
5	Burnt Oak & Watling Park	58.4%
6	Oakleigh Park	49.9%
7	Mill Hill Broadway	49.7%
8	Ducks Island & Underhill	47.2%
9	Edgware Park	47.1%
10	Brent Cross & Staples Corner	45.3%

Colindale had the highest growth of residents with a level 4 qualification or above from the 2011 Census to 2021 Census, recording a 218.4% growth. Such growth could be attributed to the re-development of the area and influx of population. Grahame Park (120.8%) and Mill Hill East (85.9%) were the second and third highest MSOAs, respectively.

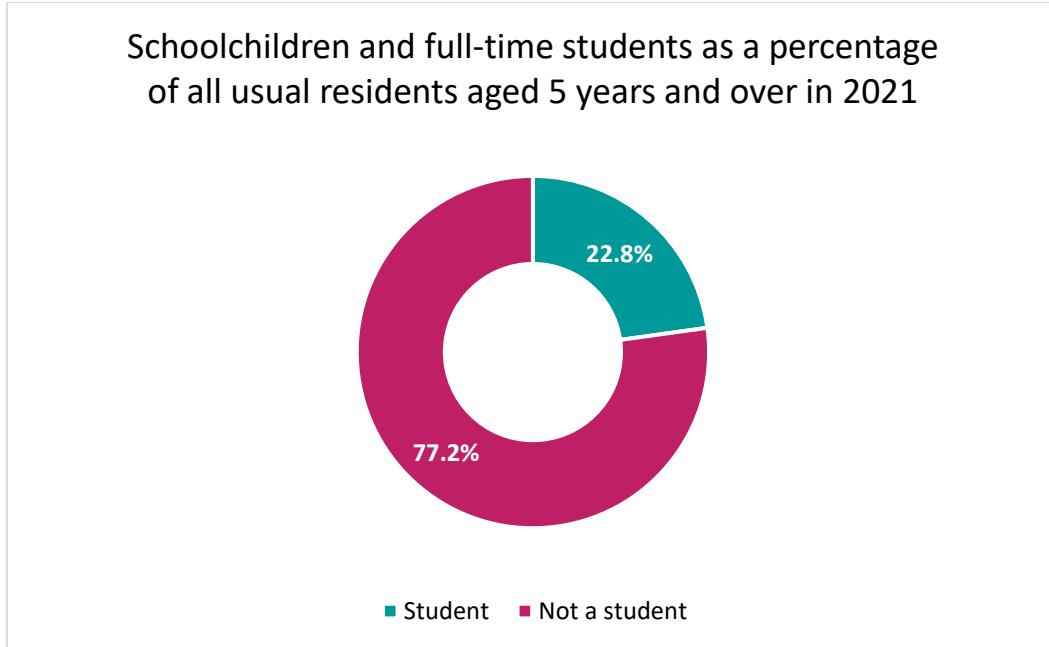
Table 7. Top 10 Barnet MSOAs with the highest percentage change of residents with no qualification from the 2011 Census to 2021 Census

Rank	MSOA	% Change in the number of residents with no qualification from 2011 to 2021
1	Colindale	116.4%
2	Golders Green South	36.7%
3	North Hendon & Sunny Hill	36.3%
4	Mill Hill Park	29.9%
5	Temple Fortune	26.4%
6	North Finchley	23.2%
7	North Cricklewood	22.8%
8	Golders Green North	21.1%
9	West Hendon	20.5%
10	Hendon Park	20.2%

When looking at the percentage change in residents with no qualification over the last decade, Colindale ranked 1st with an 116.4% increase, which was about 100% higher than the average change in Barnet. Such a huge increase that sets Colindale apart from other MSOAs in Barnet and is likely due to the growing population and corresponding demographic changes in the area.

Schoolchildren and full-time students

Chart 6. Schoolchildren and full-time students as a percentage of all usual residents aged 5 years and over at their term-time address in Barnet from the 2021 Census



Out of a total 365,000 residents aged 5 years and over in 2021 Barnet, about 83,000 residents were schoolchildren or full-time students (hereafter students). The proportion of students in 2021 in Barnet was 22.8%, which was 0.9% higher than the London average (21.9%) and 2.4% higher than the England average (20.4%). Barnet was the 10th highest London borough for the proportion of students in 2021. Other London boroughs that were on par with Barnet were Kingston Upon Thames (23%), Ealing (22.7%), and Greenwich (22.7%).

Table 8. Students as a proportion of all usual residents aged five years and over in the Census 2021 – Barnet vs London vs England

Barnet (2021)	London (2021)	England (2021)
22.8%	21.9%	20.4%

Chart 7. Percentage of student residents aged 5 years and over at their term-time address per London Borough from the Census 2021

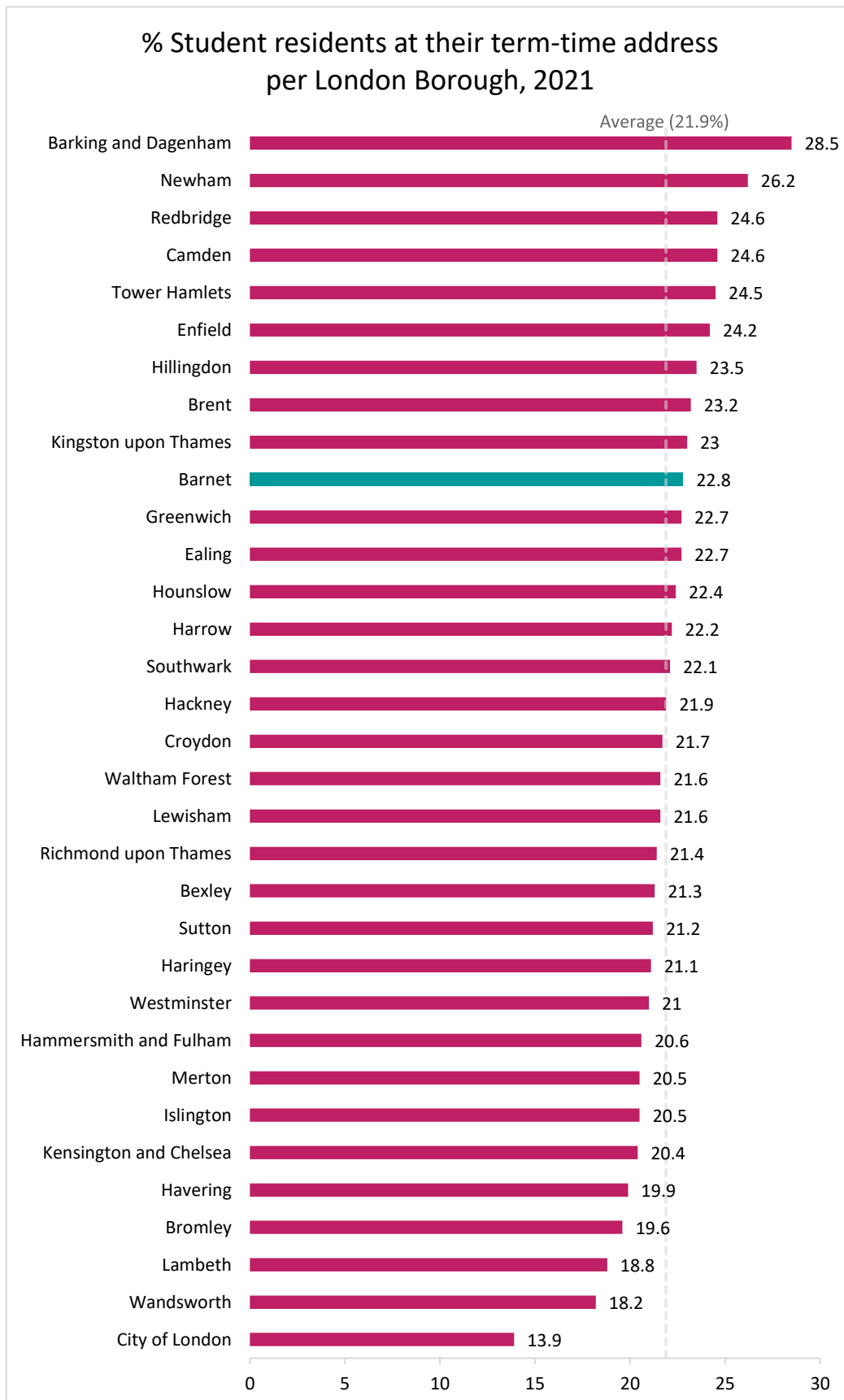
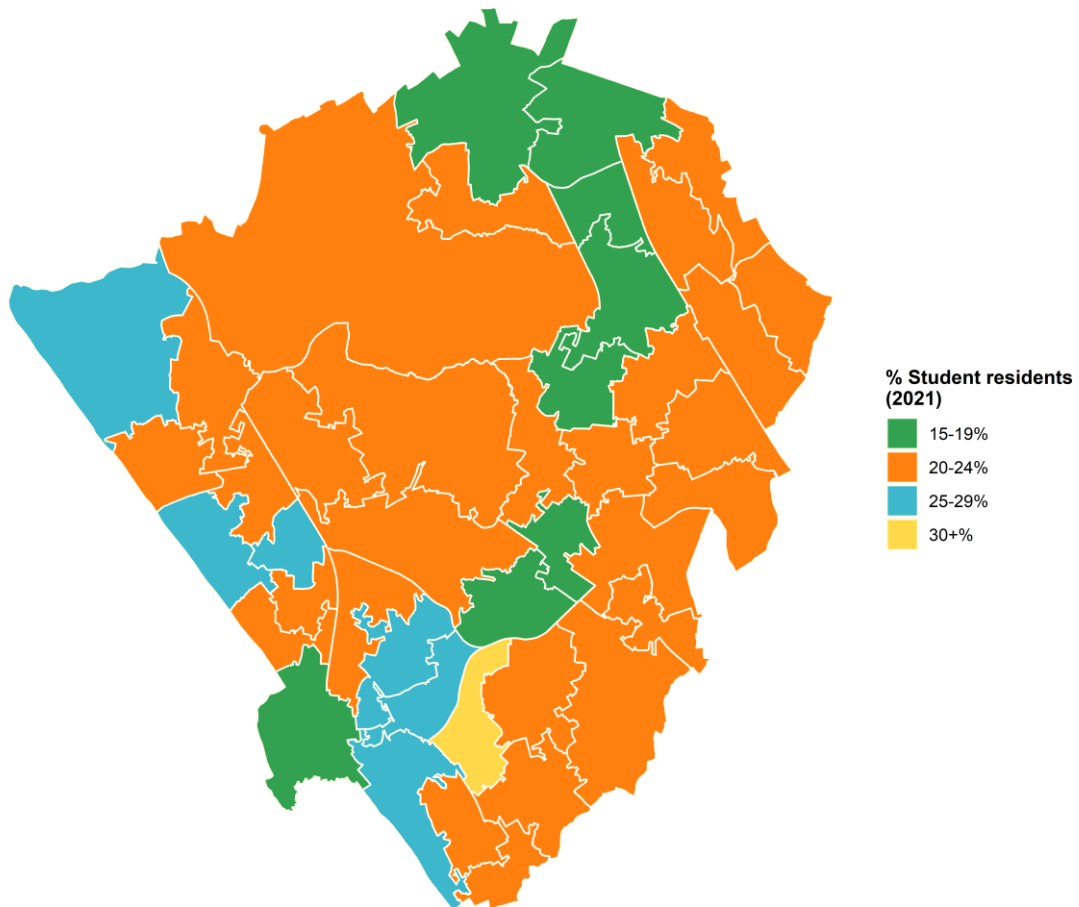


Table 9. Top 10 Barnet MSOAs with the highest percentage of student residents in the 2021 Census

Rank	MSOA	% Student residents (2021)
1	Golders Green North	30.8%
2	Hendon Park	29.1%
3	Grahame Park	28.1%
4	Hendon Central	26.2%
5	Burnt Oak & Watling Park	26.1%
6	Edgware Park	25.7%
7	Brent Cross & Staples Corner	25.0%
8	Mill Hill Broadway	24.8%
9	Edgware East	24.5%
10	Edgware Central	23.9%

In 2021, Golders Green North was the MSOA that had the highest proportion of student residents. About 30% of the residents in Golders Green North aged 5 years and over were students, which was about 7% higher than the Barnet average and 9% higher than the London average. Hendon Park (29.1%) and Grahame Park (28.1%) followed Golders Green North.

Figure 3. Map of the student residents in Barnet in the 2021 Census



Source: Office for National Statistics licensed under the Open Government License v3.0
Contains OS data © Crown copyright and database right 2023

Sources and Links

Education data:

<https://www.ons.gov.uk/peoplepopulationandcommunity/educationandchildcare/bulletins/educationenglandandwales/census2021>

Census maps:

<https://www.ons.gov.uk/census/maps?lad=E09000003>

House of Commons MSOA Names:

<https://houseofcommonslibrary.github.io/msoanames/>