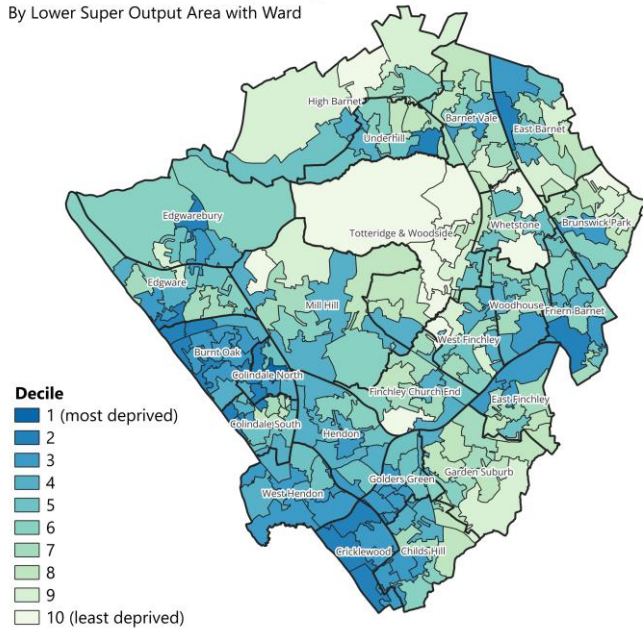


# English indices of deprivation 2025: Barnet

## 1. Barnet's deprivation profile in 2025

### Overall Index of Multiple Deprivation 2025

By Lower Super Output Area with Ward

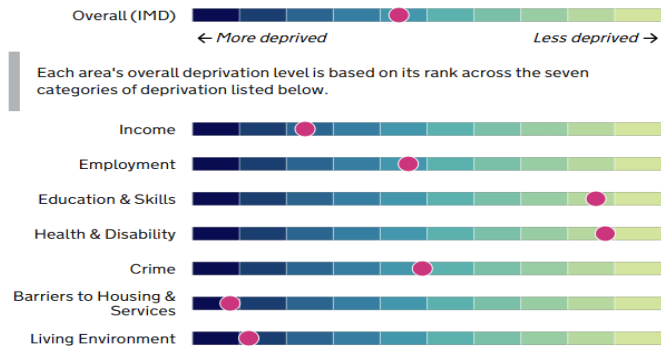


- Barnet is a borough of contrasts, with multiple pockets of deprivation and affluence.
- While much of Barnet ranks among the least deprived areas nationally, deprivation is concentrated in the south-west, particularly in Burnt Oak, Cricklewood, and Colindale North, which have a higher proportion of Lower Super Output Areas (LSOAs) in the more deprived national deciles.
- LSOAs are small statistical areas with an average population of approximately 1,600 residents as at the time of 2021 Census.

Source: English Indices of Deprivation 2025, Ministry of Housing, Communities & Local Government Office for National Statistics licensed under the Open Government Licence v3.0



- Overall, Barnet ranks as more deprived than 56% of local authority districts in England.
- The borough is relatively more deprived in areas such as income, housing, and living environment, but performs better in education and health and disability compared to many other areas.



IMD Decile	2019 LSOA Count*	2019 Percentage	2025 LSOA Count	2025 Percentage
1 (Most deprived)	1	0.5%	1	0.5%
2	6	2.7%	15	6.8%
3	26	11.8%	35	15.9%
4	20	9.1%	36	16.4%
5	25	11.4%	31	14.1%
6	30	13.6%	22	10.0%
7	35	15.9%	33	15.0%
8	36	16.4%	22	10.0%
9	32	14.5%	13	5.9%
10 (Least deprived)	9	4.1%	12	5.5%

- Currently, Barnet has one LSOA in the most deprived 10% nationally, highlighting a small but significant area of acute need.
- Conversely, 12 LSOAs—around 5.5% of Barnet's total—are in the least deprived 10% nationally, reflecting areas of high affluence.

Caring for people, our places and the planet

\*IoD2019 were originally published based on 2011 LSOA boundaries. The IoD2019 figures have been adjusted to the latest 2021 boundaries (source: Office for Health Improvement and Disparities)

# English indices of deprivation 2025: Barnet

## 2. How does Barnet compare to other London boroughs?

The chart below shows the distribution of LSOAs within the national Indices of Multiple Deprivation (IMD) 2025 quintiles for each London Borough.

- 7.3% of Barnet’s LSOAs fall within the most deprived 20% nationally (Quintile 1), which is lower than the London average of 13.5%.
- 32.3% of Barnet’s LSOAs are in Quintile 2 compared to 16.3% in London, indicating a concentration in the second quintile.
- 24.1% of Barnet’s LSOAs are in Quintile 3 vs. 21% in London,
- 25% of Barnet’s LSOAs are in Quintile 4 vs. 31.3% in London,
- 11.8% of Barnet’s LSOAs are in the least deprived quintile nationally compared to 17.9% in London.
- Newham has the highest proportion of LSOAs in the most deprived quintile nationally under the 2025 Indices of Deprivation.
- Three boroughs—Richmond upon Thames, Kingston upon Thames, and City of London—have no LSOAs in the most deprived 20% nationally.
- Almost two-thirds of LSOAs in Richmond upon Thames rank in the least deprived quintile.

**Distribution of LSOAs by Index of Multiple Deprivation quintile (2025)**



☆ Borough has 0% LSOAs in Most deprived quintile.  
Vertical lines show London averages.  
Source: Office for National Statistics licensed under the Open Government License v.3.0



# English indices of deprivation 2025: Barnet

## 2. How does Barnet compare to other London boroughs?

- Overall Barnet is ranked the 11<sup>th</sup> least deprived out of 33 London Boroughs for the 2025 IMD.
- In 2019, Barnet was ranked the 8<sup>th</sup> least deprived borough out of 33 London Boroughs indicating that Barnet’s relative position to other London Boroughs has worsened.
- When looking at the individual 2025 deprivation domains, Barnet is ranked 15<sup>th</sup> for Income and Employment domains and 12<sup>th</sup> for income deprivation affecting children (IDACI) and 12<sup>th</sup> for income deprivation affecting older people (IDAOP).  
*(Note: The text in the image incorrectly states IDAOPI, which is not a standard acronym.)*
- In 2019, Barnet’s rankings for the individual deprivation domains were 11<sup>th</sup> for Income, 10<sup>th</sup> for Employment, 6<sup>th</sup> for income deprivation affecting children (IDACI) and 11<sup>th</sup> for income deprivation affecting older people (IDAOP). Again, indicating that Barnet’s relative position to other London Boroughs has worsened.

Ranks of domain deprivation by London Boroughs

London Borough	IMD Rank	Income Rank	Employment Rank	IDACI Rank	IDAOP Rank
Richmond upon Thames	1	2	2	1	2
City of London	2	1	1	2	1
Kingston upon Thames	3	4	3	4	6
Bromley	4	3	5	3	3
Sutton	5	5	8	5	7
Merton	6	10	6	8	8
Wandsworth	7	8	4	10	16
Bexley	8	6	10	7	4
Havering	9	10	11	9	5
Harrow	10	13	7	15	9
Barnet	11	15	15	12	12
Redbridge	12	19	13	14	13
Kensington and Chelsea	13	7	9	6	18
Hillingdon	14	15	12	13	10
Hammersmith and Fulham	15	11	15	11	24
Croydon	16	21	26	18	11
Lambeth	17	16	18	23	28
Southwark	18	18	20	21	29
Waltham Forest	19	24	22	24	19
Greenwich	20	21	23	16	20
Camden	21	18	22	19	26
Westminster	22	12	18	22	23
Hounslow	23	23	16	21	15
Lewisham	24	22	28	18	21
Ealing	25	26	19	25	17
Islington	26	25	29	28	30
Enfield	27	29	32	29	14
Brent	28	28	27	30	22
Barking and Dagenham	29	30	31	26	25
Tower Hamlets	30	33	25	33	33
Haringey	31	27	30	27	27
Newham	32	31	25	31	31
Hackney	33	32	33	32	32



Negative values denote worsening relative position to other English local authorities  
Source: Office for National Statistics licensed under the Open Government License v3.0

## 2. How does Barnet compare to other London boroughs?

- While being ranked the 11<sup>th</sup> least deprived borough out of 33 London Boroughs, Barnet has seen the greatest relative negative change in overall deprivation rank out of all London Boroughs.
- Nationally, Barnet ranks second in terms of the greatest negative relative change in deprivation rank across all English local authorities. The only area with a greater negative shift is Tunbridge Wells. Barnet is followed by Derbyshire Dales (3rd), Melton (4th), Boston (5th), Camden (6th), Sevenoaks (7th), Westminster (8th), Harrow (9th), and Hounslow (10th).
- Compared nationally, Barnet is now ranked 129<sup>th</sup> most deprived local authority in England, compared to 184<sup>th</sup> in the previous IMD release—a drop of 55 places.
- Barnet ranks first among the 33 London boroughs for the greatest relative worsening in employment deprivation rank compared to all other English local authorities. It also ranks second for income deprivation and income deprivation affecting children, and tenth for income deprivation affecting older people.
- This change indicates that Barnet has become relatively more deprived compared to other areas, despite its traditionally more affluent profile.

**Relative change in national rank (2019 - 2025) by deprivation domain and by London Borough**

London Borough	IMD	Income	Employment	IDAOP1	IDAC1
Barnet	-55	-67	-65	-19	-87
Camden	-49	-12	-42	-16	-1
Westminster	-47	-16	-27	-20	-23
Hounslow	-46	-51	-58	-9	-49
Harrow	-46	-75	-41	4	-118
Ealing	-43	-45	-39	-1	-76
Hillingdon	-35	-59	-35	-51	-35
Redbridge	-33	-60	-53	2	-67
Brent	-27	-32	-36	1	-64
Enfield	-22	-21	-49	-2	-18
Richmond upon Thames	-15	-6	-16	-41	-6
Kingston upon Thames	-11	-42	-35	-33	-17
Haringey	-8	-16	-35	2	-27
Tower Hamlets	-7	-7	-16	-1	0
Merton	-7	-47	-30	-24	-2
Havering	-6	-26	-23	-12	16
Newham	-5	-17	-40	0	-33
Sutton	-3	-24	-28	-39	10
Hackney	3	0	-26	1	-11
Croydon	3	-36	-46	-28	-10
Barking and Dagenham	4	-3	-25	-2	-2
Kensington and Chelsea	8	-7	-4	-28	-3
Bexley	10	3	-12	-30	56
Lewisham	11	8	-16	-4	38
Islington	11	6	-16	0	8
Hammersmith and Fulham	12	14	16	-6	26
Greenwich	14	4	0	-4	23
Bromley	18	4	-7	-15	46
Wandsworth	20	-11	1	0	-1
Waltham Forest	20	-17	-28	-2	-13
Southwark	24	11	-2	-1	36
Lambeth	28	9	-2	-1	21
City of London	59	3	7	-14	-37



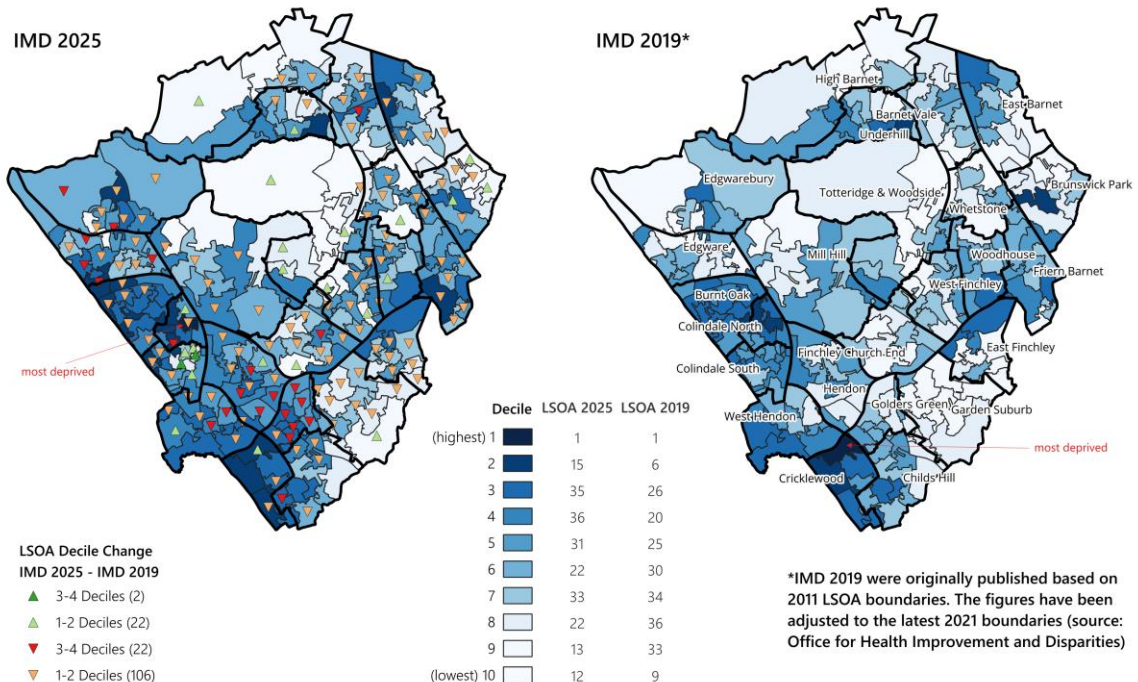
Negative values denote worsening relative position to other English local authorities  
 Source: Office for National Statistics licensed under the Open Government License v3.0

Caring for **people**, our **places** and the **planet**

## 3. What does a change in deprivation really mean for Barnet?

- The Indices of Deprivation (IoD) 2025 use the same overall framework as previous versions, but the details and underlying methodology have changed.
- The number of indicators has increased from 39 in the 2019 indices of deprivation to 55 in the 2025 indices of deprivation, and some methods have been updated. This means the IoD is best seen as a snapshot in time, not a perfectly consistent trend measure.
- Following the 2021 Census, changes were made to all LSOAs nationally with the split and merger of LSOAs that informed the 2019 IoD. Best fit methodology has been used to approximate the LSOAs used in the 2019 IoD to the 2021 LSOA boundaries. This allows for some comparison to the LSOAs used in the 2025 IoD but any direct comparisons should be interpreted with caution.
- Changes between 2019 and 2025 show how an area compares relative to other areas at that point in time and not whether deprivation has absolutely improved or worsened. For example, if a neighbourhood moves from the most deprived 20% to the most deprived 10%, it means it is now relatively worse compared to other neighbourhoods nationally—but part of that change could be due to updated indicators.
- 196 Barnet LSOAs (around 89% of all LSOAs) are in a lower decile in 2025 than they were in 2019. This means these areas now rank as more deprived in 2025 than they did in 2019.
- The map below shows the 2025 and 2019 indices of deprivation by LSOA in Barnet with an indication of whether the decile of the individual LSOA has increased or decreased between 2019 and 2025.

Overall Index of Deprivation by Lower Super Output Area (LSOA) 2025 and 2019



\*IMD 2019 were originally published based on 2011 LSOA boundaries. The figures have been adjusted to the latest 2021 boundaries (source: Office for Health Improvement and Disparities)

Source: Office for National Statistics licensed under the Open Government Licence v3.0

## 4. Where in Barnet have the most significant shifts in deprivation occurred?

- Compared to 2019, 15 Barnet wards have seen an increase in the share of neighbourhoods ranked among the 40% most deprived nationally.
- The largest rises were in Golders Green (+55.6%), Hendon (+45.5%), West Hendon (+40%), Childs Hill (+36.4%), and Mill Hill (+33.3%). This means these areas are now relatively more deprived compared to other parts of England than they were in 2019.
- Seven wards showed no change: Whetstone, Totteridge & Woodside, High Barnet, Garden Suburb, East Finchley, Colindale North, and Brunswick Park.
- Two wards were relatively less deprived, with fewer neighbourhoods in the most deprived 40%: Colindale South (-18.2%) and Underhill (-14.3%), which may reflect wider regeneration efforts.

Percentage of LSOAs in the top 40% most deprived nationally by Barnet ward

Barnet Ward	2019	2025	Change (pp)
Colindale South	54.5	36.4	-18.2
Underhill	42.9	28.6	-14.3
Whetstone	0	0	0
Totteridge & Woodside	11.1	11.1	0
High Barnet	14.3	14.3	0
Garden Suburb	0	0	0
East Finchley	30	30	0
Colindale North	83.3	83.3	0
Brunswick Park	20	20	0
Friern Barnet	18.2	27.3	9.1
East Barnet	20	30	10
Edgwarebury	25	37.5	12.5
Woodhouse	14.3	28.6	14.3
Burnt Oak	84.6	100	15.4
Cricklewood	83.3	100	16.7
Finchley Church End	0	20	20
Barnet Vale	0	20	20
Edgware	11.1	33.3	22.2
West Finchley	0	25	25
Mill Hill	0	33.3	33.3
Childs Hill	18.2	54.5	36.4
West Hendon	40	80	40
Hendon	18.2	63.6	45.5
Golders Green	0	55.6	55.6

Source: Office for National Statistics licensed under the Open Government License v.3.0



## 5. Additional resources

- The Ministry of Housing, Communities & Local Government (MHCLG) has published the following frequently asked questions resource about the latest indices of deprivation: [English indices of deprivation 2025: frequently asked questions - GOV.UK](#)
- MHCLG has also produced a series of interactive data tools allowing users to explore the 2025 indices of deprivation and what they mean for their local area: [Local Deprivation Explorer - Home](#)

## 6. Further guidance

### What can the indices be used for?

#### Comparing small areas across England

The IoD25 uses the same data sources and combines them in the same way for every small area in England. This means you can directly compare the ranks of different small areas in England. If a small area's rank is closer to 1 than that of another area, it is more deprived.

#### Identifying the most deprived small areas

You can identify which small areas are amongst the most deprived in England using the published deciles, for example, to show which areas are amongst the 10% or 20% most deprived small areas nationally. You can also apply different cut-off points to the ranks to identify, for example, the 1% or 5% most deprived small areas nationally.

#### Exploring the domains (or types) of deprivation

You can look at the index for each of the seven domains, and two supplementary domains, to explore which types of deprivation e.g. income or health, are more prominent within areas or to focus on particular types of deprivation and explore how areas rank across each.

#### Comparing larger areas e.g. Local Authority Districts

A range of summary measures highlighting different aspects of deprivation are provided for larger areas, including Local Authority Districts. Because patterns of deprivation across larger areas can be complex, there is no single summary measure that is the 'best' measure. Comparison of the different measures is needed to give a fuller descriptions of deprivation for larger areas.

### What can't the indices be used for?

#### Quantifying how deprived a small area is

The IoD25 provides a suite of relative measures of deprivation. This means that each can tell you if one area is more deprived than another but not by how much. For example, a small area with a rank of 1,000 is not half as deprived as a place with a rank of 500.

#### Identifying deprived people

The IoD25 release provides measure of relative deprivation in an area and all are suitable for use where deprivation is concentrated in small areas. Within every area there will be individuals who are deprived and individuals who are not. The Index is not a suitable tool for targeting individuals.

#### Saying how affluence a place is

The IoD25 is designed to identify aspects of deprivation, not affluence. For example, the Income Deprivation domain is concerned with people on low incomes who are in receipt of a range of benefits and tax credits. An area with a relatively small proportion of people (or indeed no people) on low incomes may also have relatively few of no people on high incomes. Such an area may be ranked among the least deprived in the country, but it is not necessarily among the most affluent.

#### Comparing with small areas in other UK countries

Each country in the UK produces its own version of the Index of Multiple Deprivation using similar methodologies. However, differences in the indicators used, the time periods covered, and the sizes of their small areas mean that it is not possible to make direct comparisons between these indices. Future, more specific harmonised releases will aim to aid this comparison.

#### Measuring real change in deprivation over time

As explained above, one can compare the ranking as determined at the relevant time point by each version of the Indices of Deprivation. But the Indices are not designed to provide 'backwards' comparability with previous iterations. Changes between version of the indices can limit the ability to make comparisons over time.