

# Borough Data Partnership

## Meeting #5

Nesta

12 April 2016

GREATERLONDONAUTHORITY



# A City Data Strategy for London



**@AndrewCollinge**

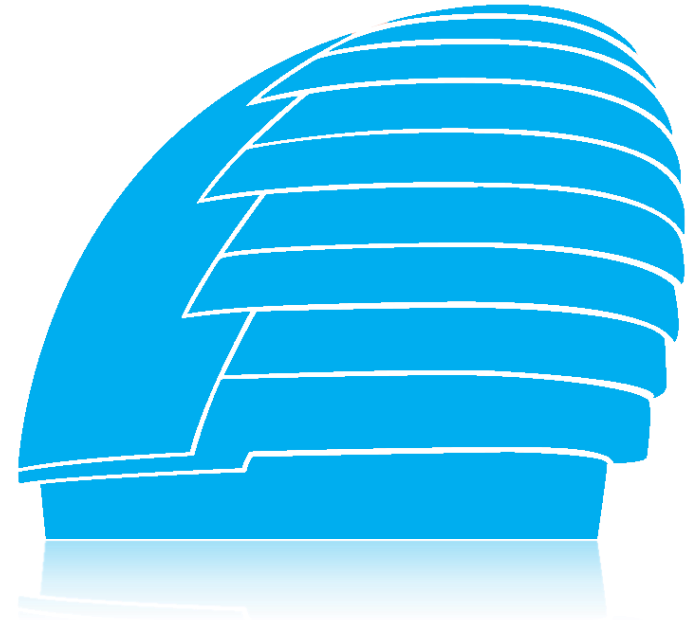
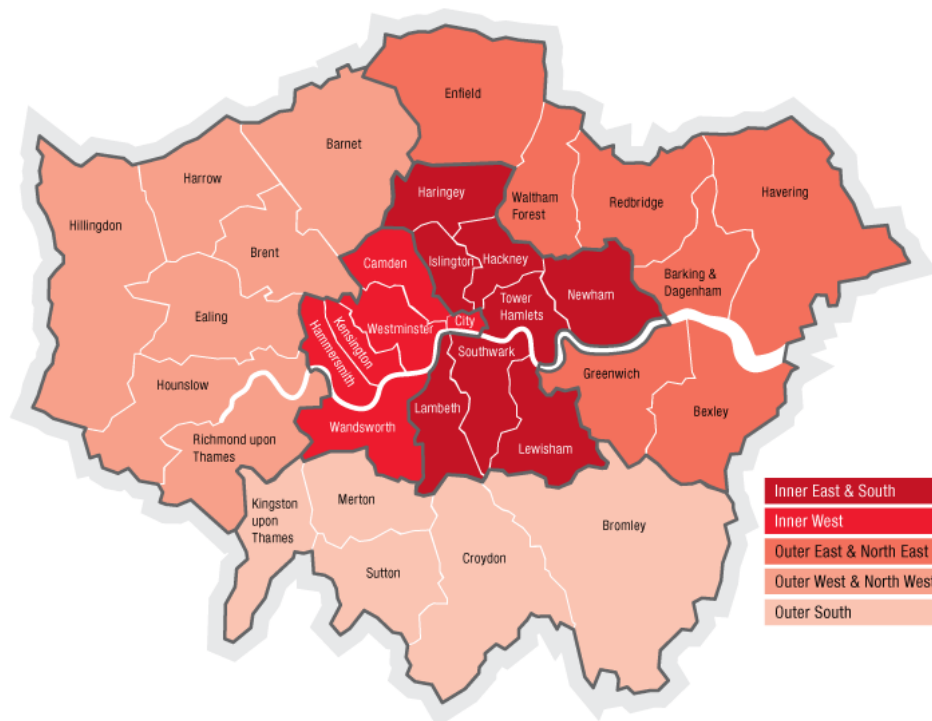
# The case for change



# The Public Services Open Data Model



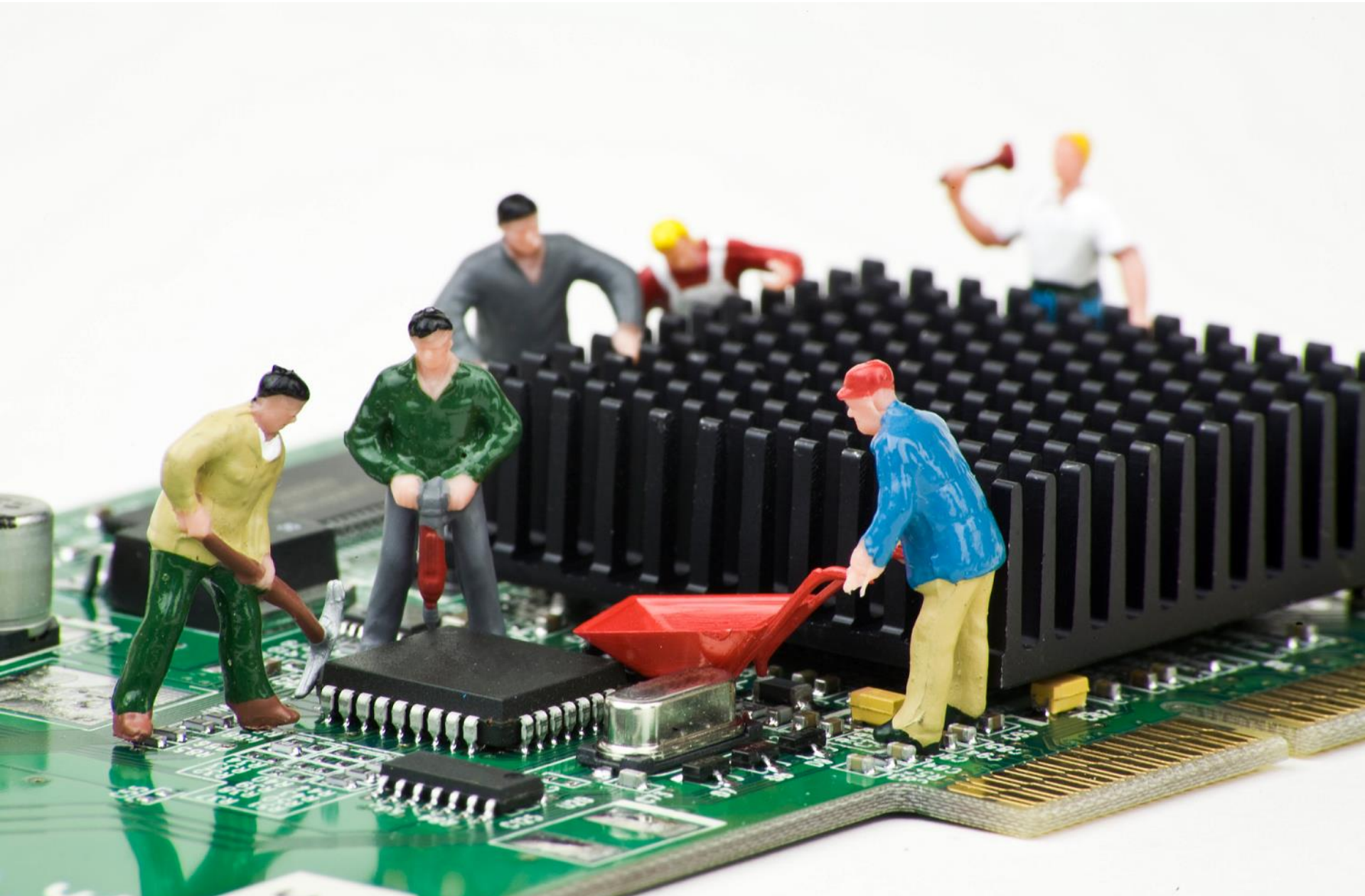
# Organising for 21<sup>st</sup> Century Government Services



Average borough population: **255,000**

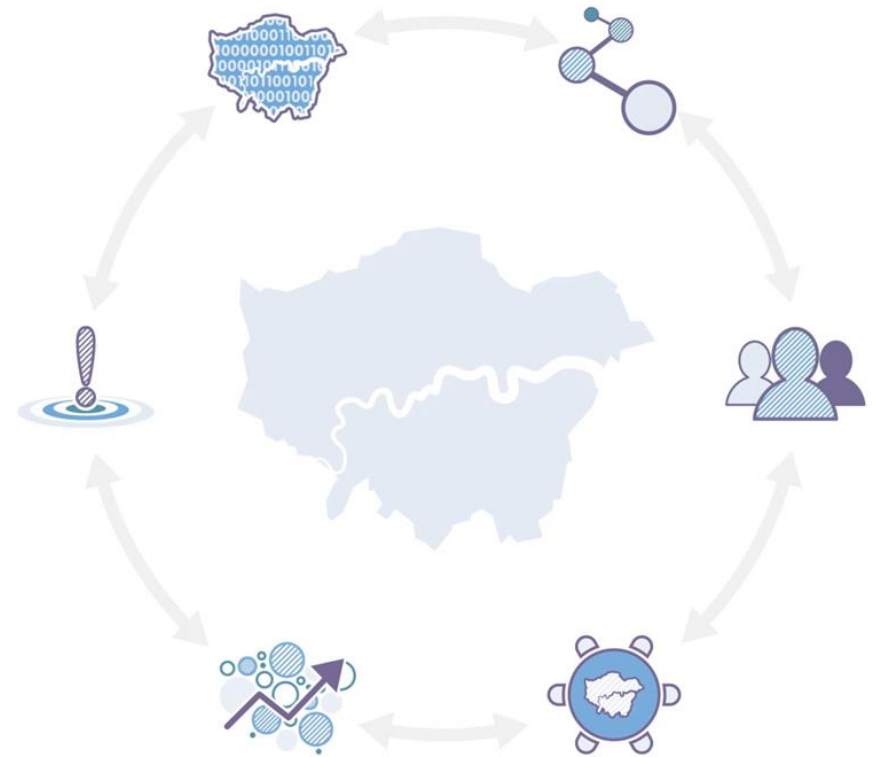


# The Broader City Technology Agenda



# A City Data Strategy for London

*We want London to have the most dynamic and productive City Data Market in the world. In our City Data Market, the capabilities, talents and capacity of all our city data partners will impact on our huge social, economic and service-based challenges. To make this happen, friction in the sharing and value-driven exploitation of city data will be reduced to a minimum. City data will be recognised as part of the capital's infrastructure. We will use it to save money, incubate innovation and drive economic growth. And London will achieve global renown for data impact.*



[www.data.london.gov.uk/data-for-london/](http://www.data.london.gov.uk/data-for-london/)

# A City Data Strategy for London

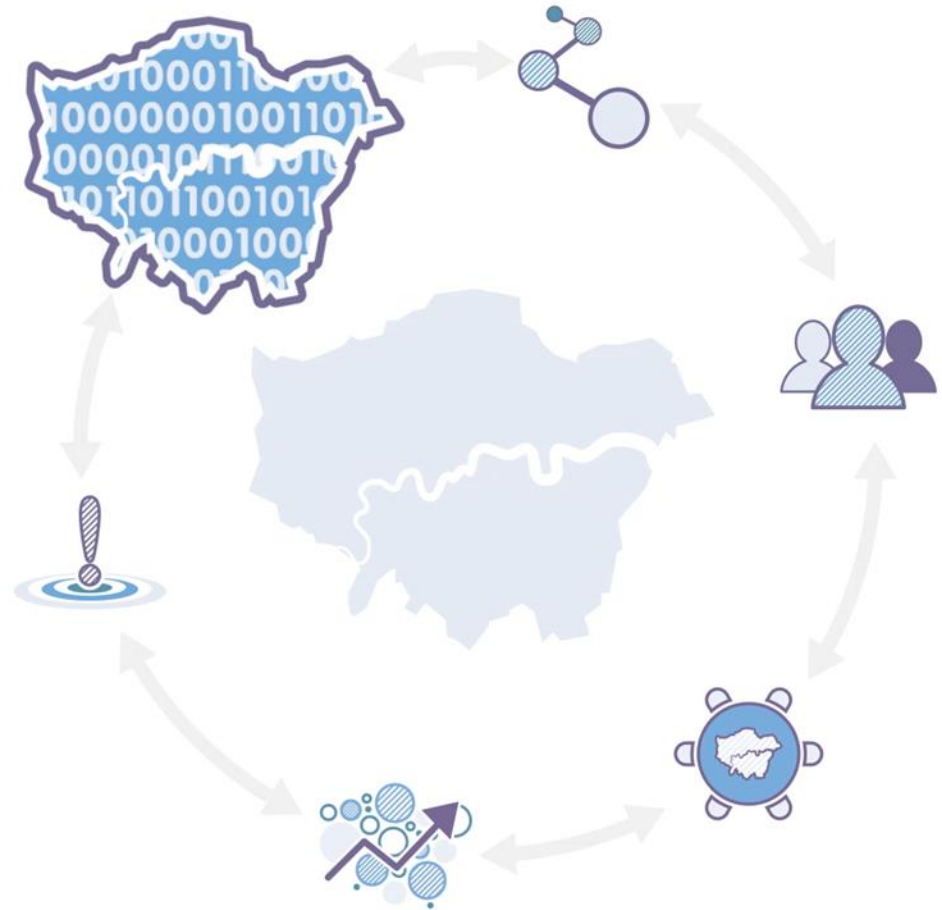
6 themes.....





# Developing London's Data Market

We want to build and operate an efficient city data market and create supporting tools so that the value of city data can be fully exploited. This means making data available to create better city services, better functioning city infrastructure, and economic impact. It also means providing the means to change organisational culture and capacity so that open innovation is an accepted approach and one in which all parties can play a part.



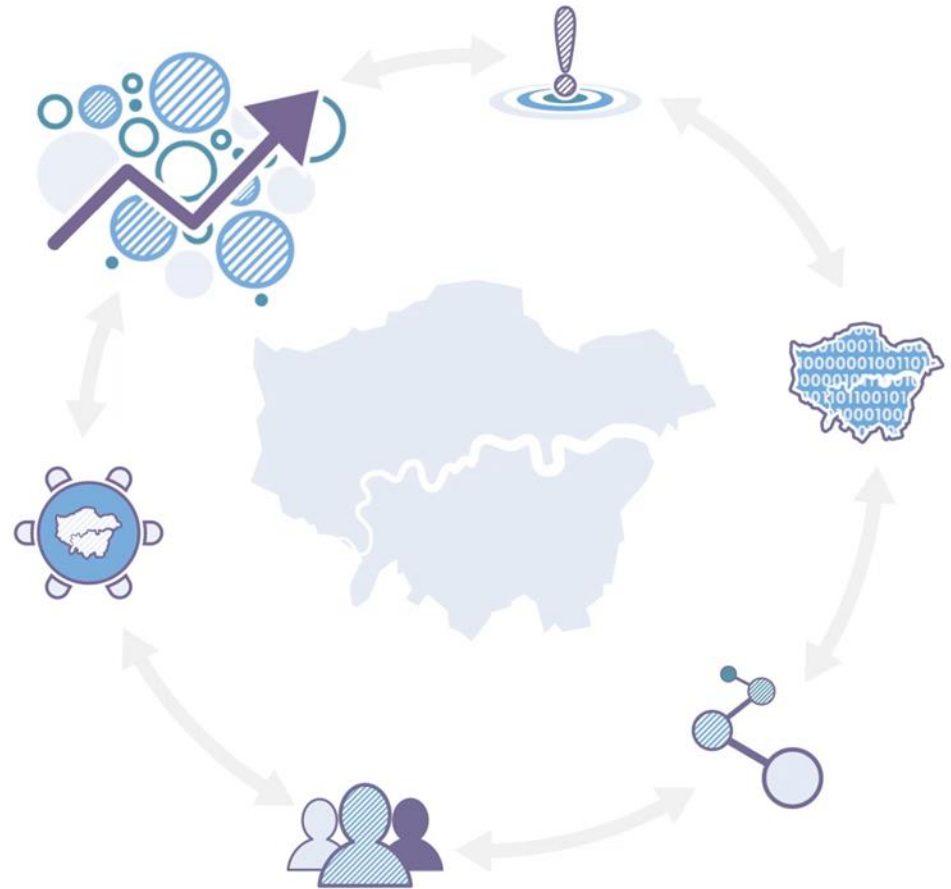
# Organising City Data for Impact

Better organisation of City Data is needed if it is to have a strong underpinning role in public service decision making and infrastructure investment decisions, and broader innovation. It can be used more systematically and rigorously to manage city services and assets, and can also be more effective in creating a true 'City as platform' approach and new business models.



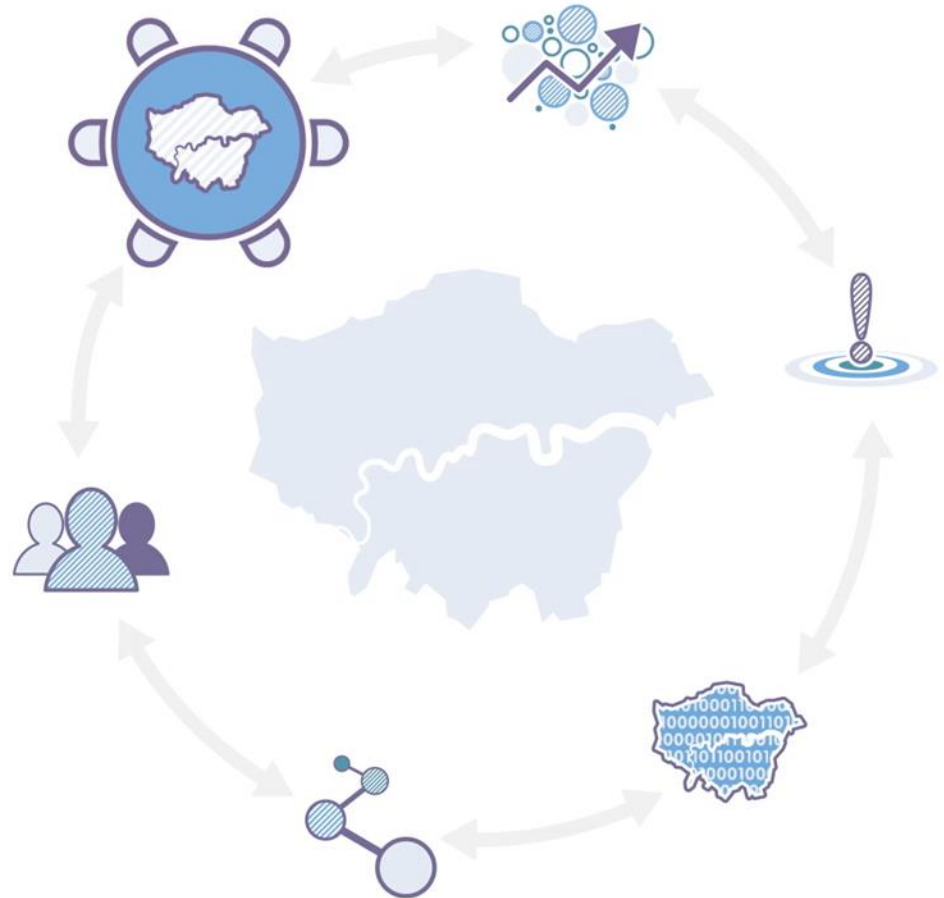
# The Value of City Data is properly recognised

The value of city data must be considered across social, environmental, economic, as well as financial domains. By establishing better measures and monetising data, value-based transactions can be properly understood by all partners, and can therefore take place, in the City Data Market.



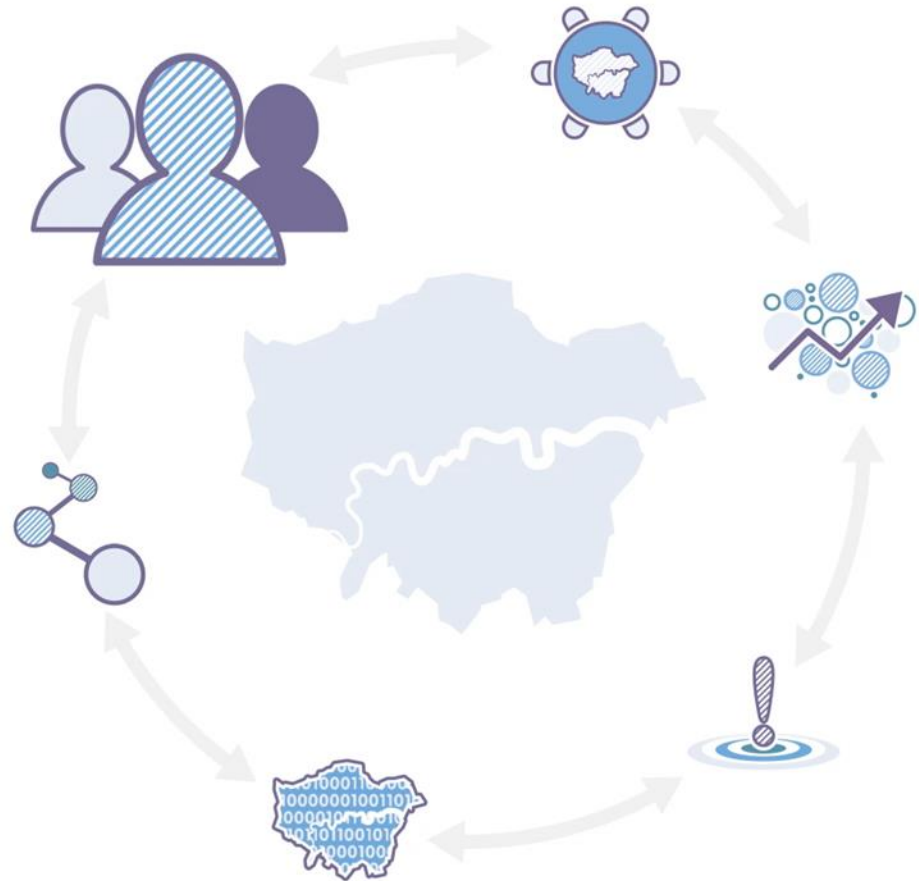
# Active and Effective Governance

Active governance is now needed around London's City Data Market so that strategic challenges can be addressed, and opportunities can be anticipated and capitalised upon. More prosaic but just as important, good governance will lead to a better understanding of regulatory and legal issues so that the sharing of data and benefit derived from it are both maximised, and harm limited. This activity is vital if new business models needed to underpin data-driven products and 'smart' initiatives are to emerge and succeed.



# Public Acceptance

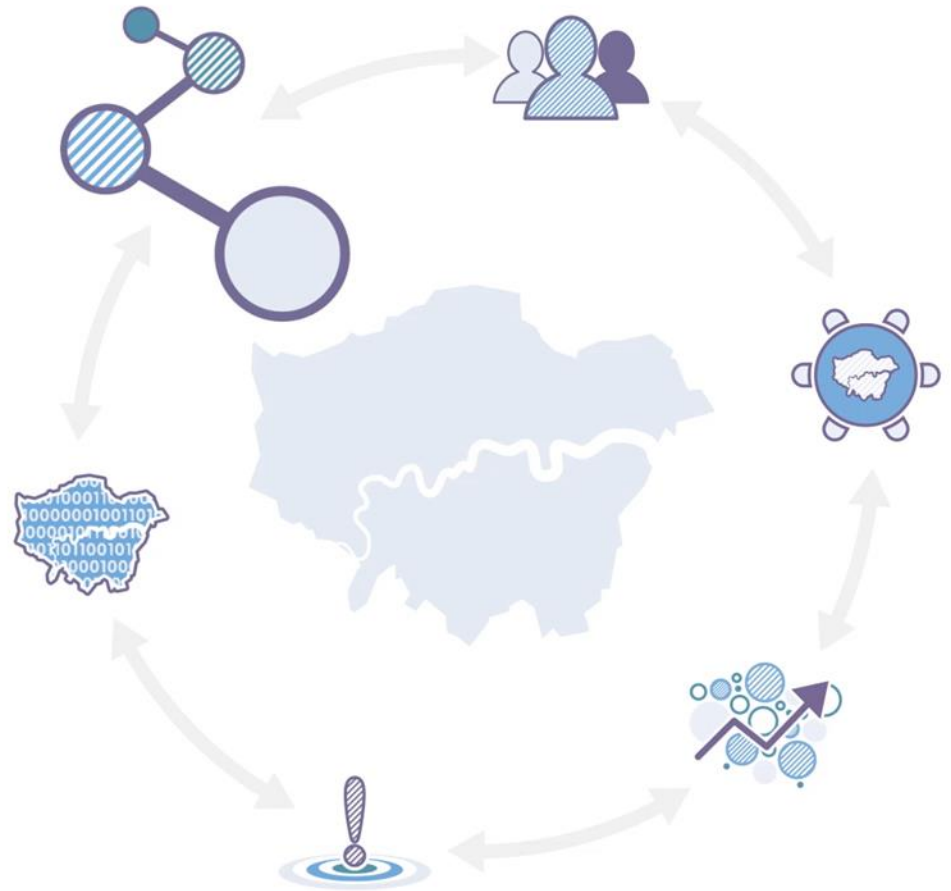
The next era of data exploitation and the services it has the potential to create will only become a reality if security, privacy and trust issues in relation to personal data are adequately addressed. A greater appreciation on the part of the public about how their personal data can be used to generate value for the economy, for wider society as well as themselves, will lead to increased data supply and will ultimately drive public uptake of services.



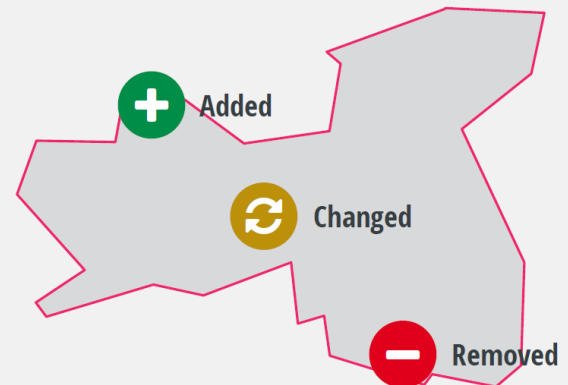
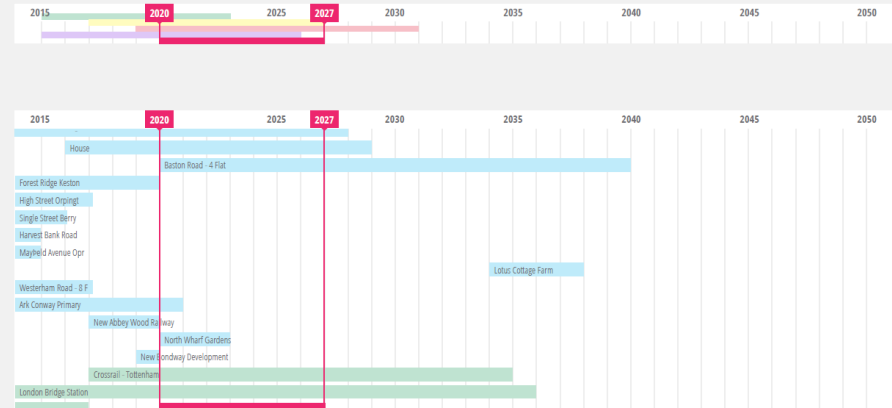
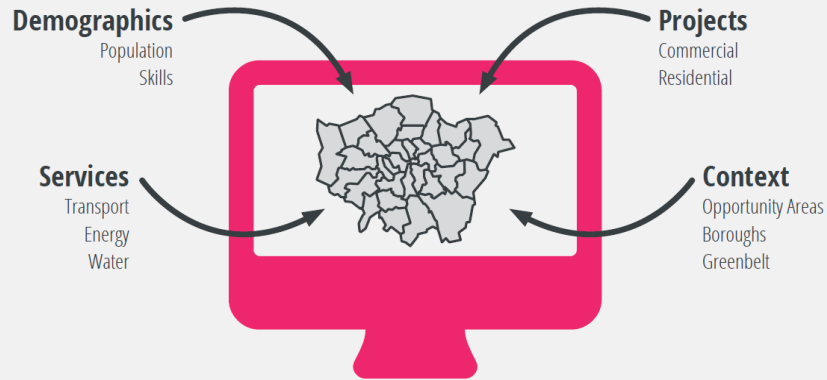


# Technology Roadmap

Effective co-ordination of the city's Data Infrastructure through a technology road map needs to happen with urgency. If we fail, then London faces the prospect of missing the opportunity to provide true twenty-first century public services, and failing to integrate vital services like health and social care. We risk falling short in digital innovation and delivery, and generally limiting the city's economic competitiveness.

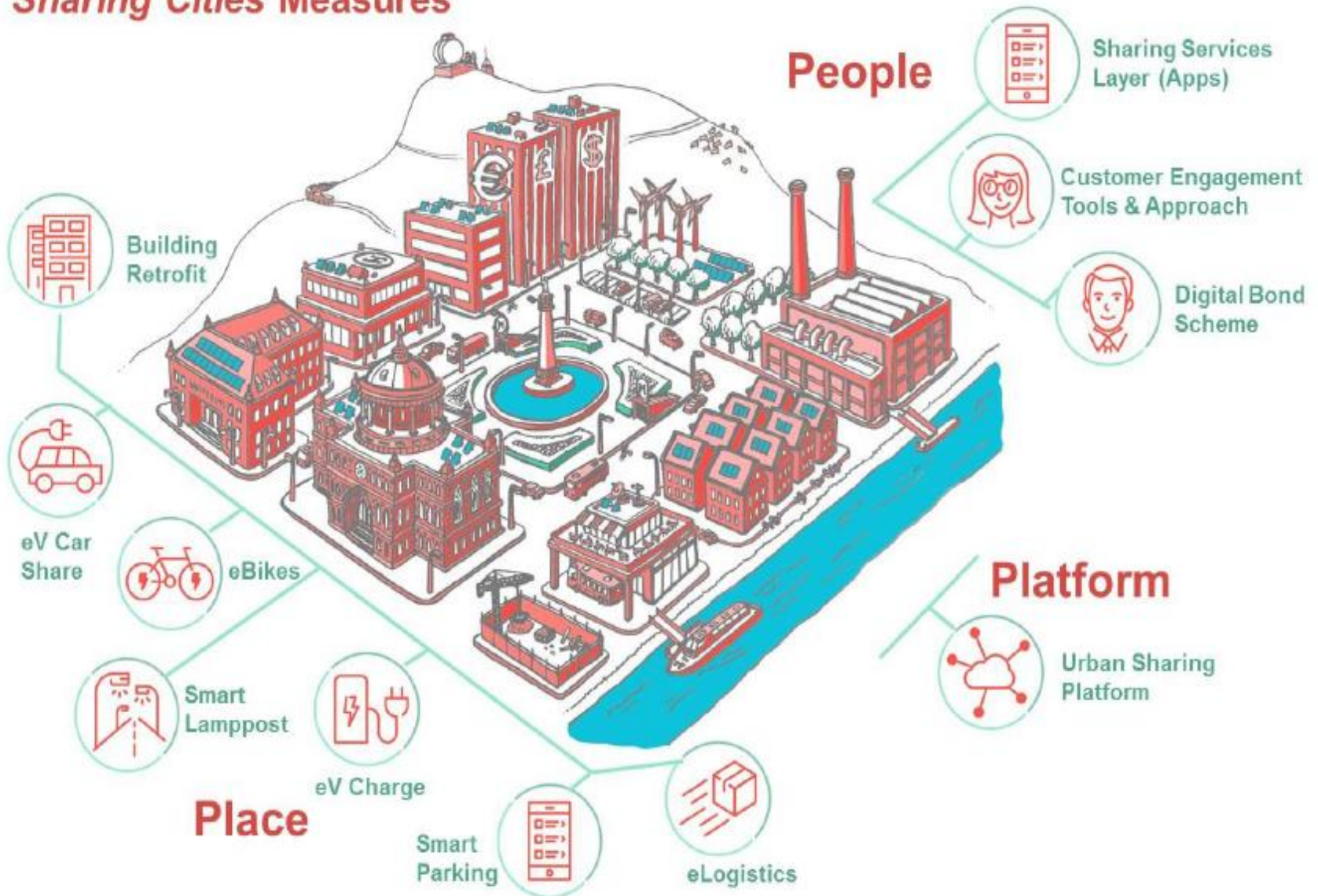


# 2050 Infrastructure needs (London IMA)

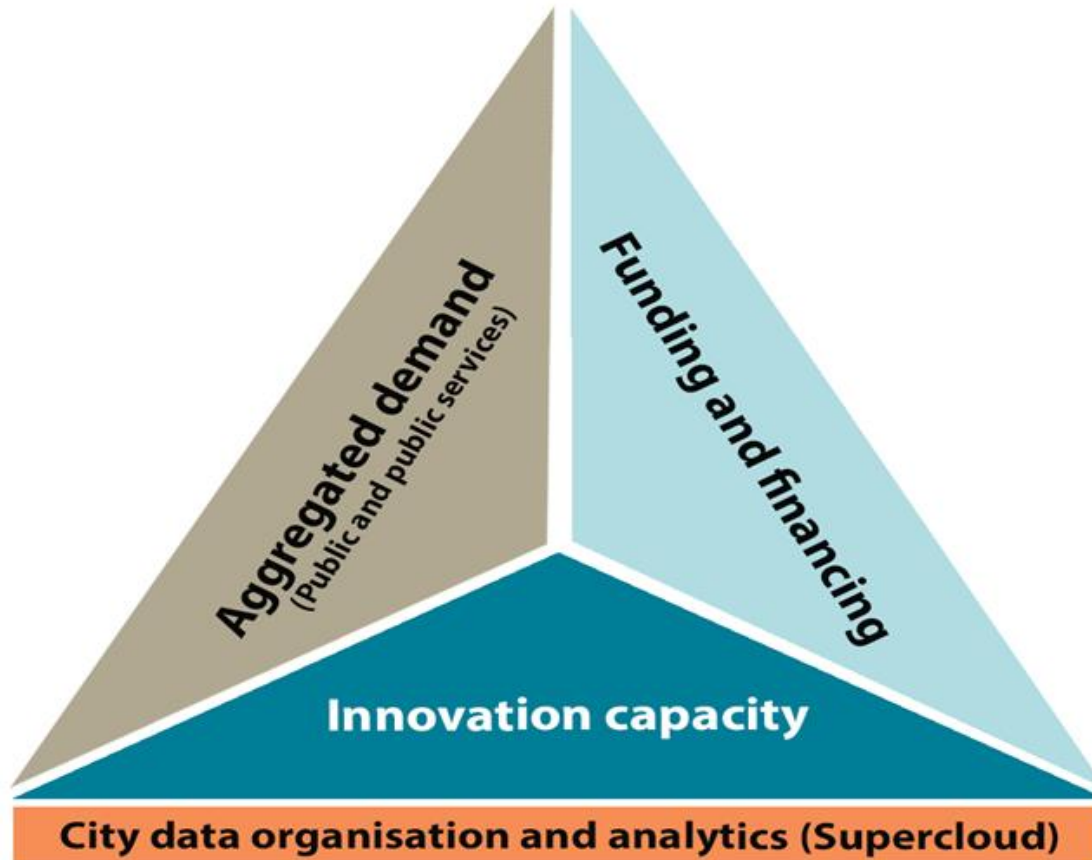


# IoT – Sharing Cities programme

## Sharing Cities Measures



# London Innovation Landscape



# To conclude...

- **‘Rich’ policy setting laced with opportunity and challenge**
- **Not about ownership**
- **clarity, co-ordination and co-operation**
- **Building data infrastructure for London**
- **Humans and innovation capacity**





# **London**

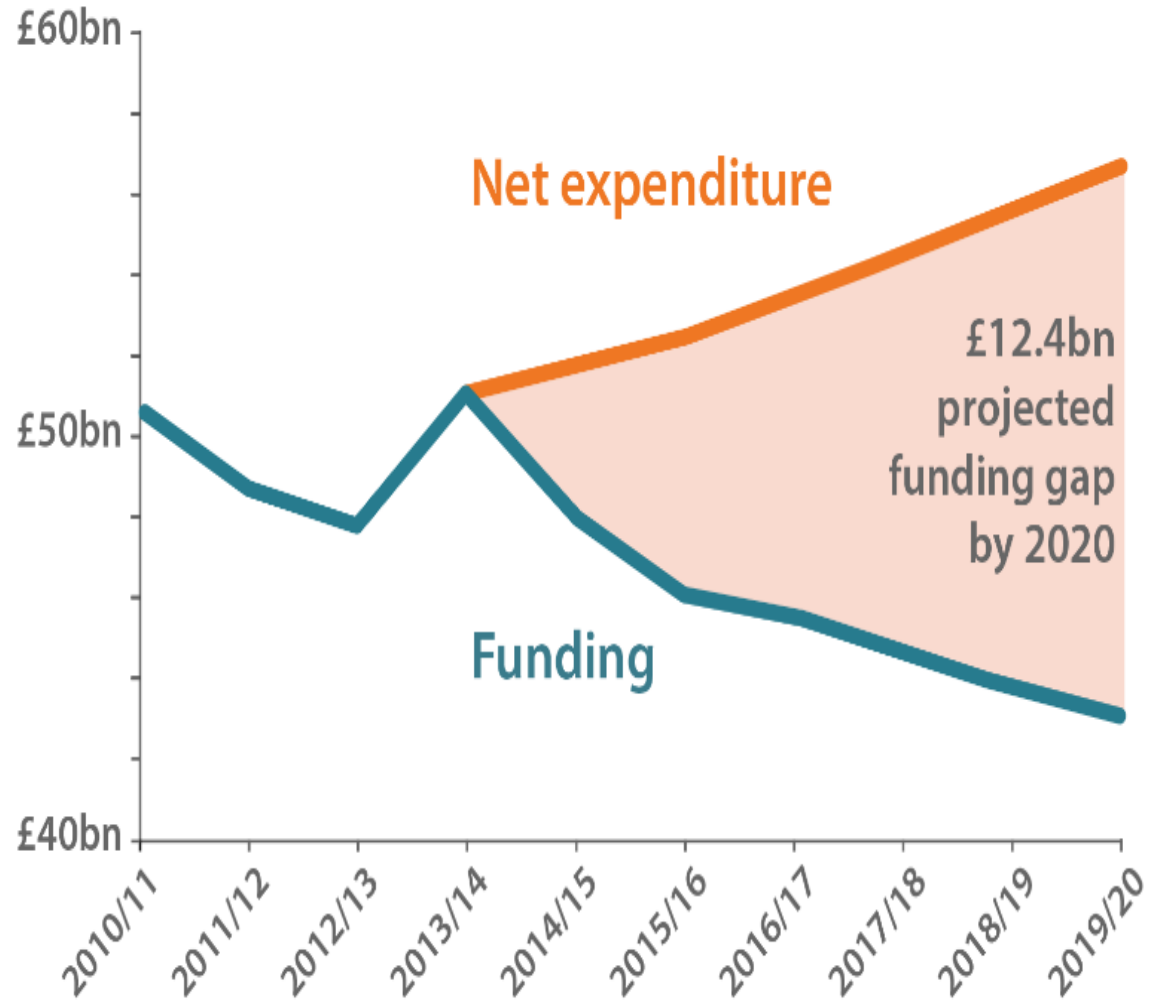
# **Office of Data Analytics**

@EddieACopeland

**Government Innovation Team**

**Nesta...**

# The problem



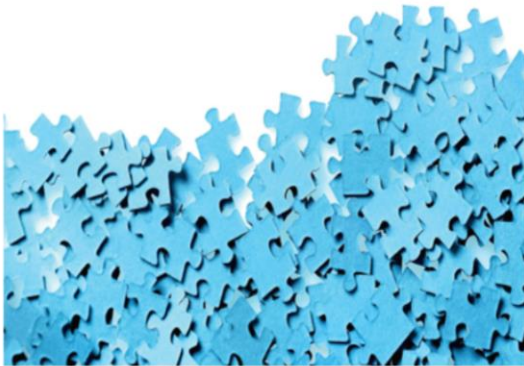
# The need for ODAs

## Small Pieces Loosely Joined

Policy  
Exchange

How smarter use of technology  
and data can deliver real reform  
of local government

Eddie Copeland

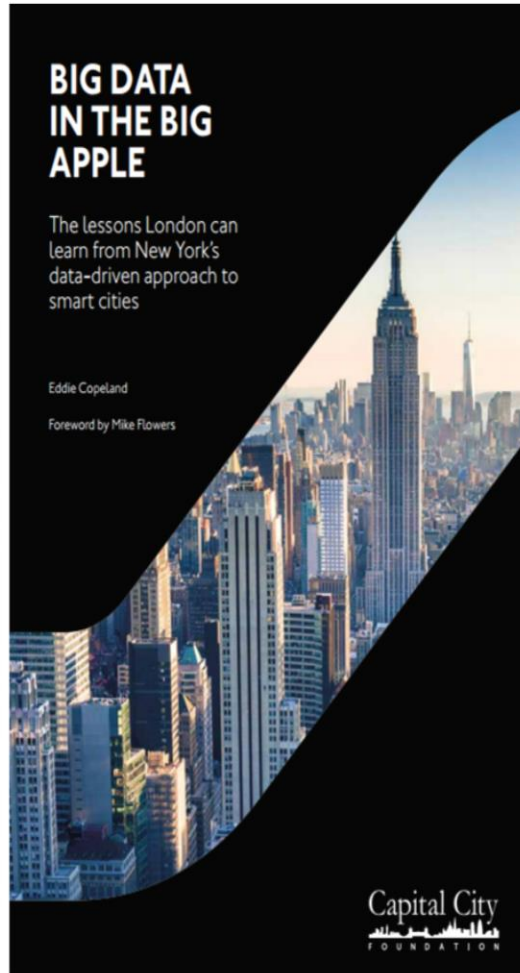


## BIG DATA IN THE BIG APPLE

The lessons London can  
learn from New York's  
data-driven approach to  
smart cities

Eddie Copeland

Foreword by Mike Flowers



Capital City  
FOUNDATION

## Smart Devolution

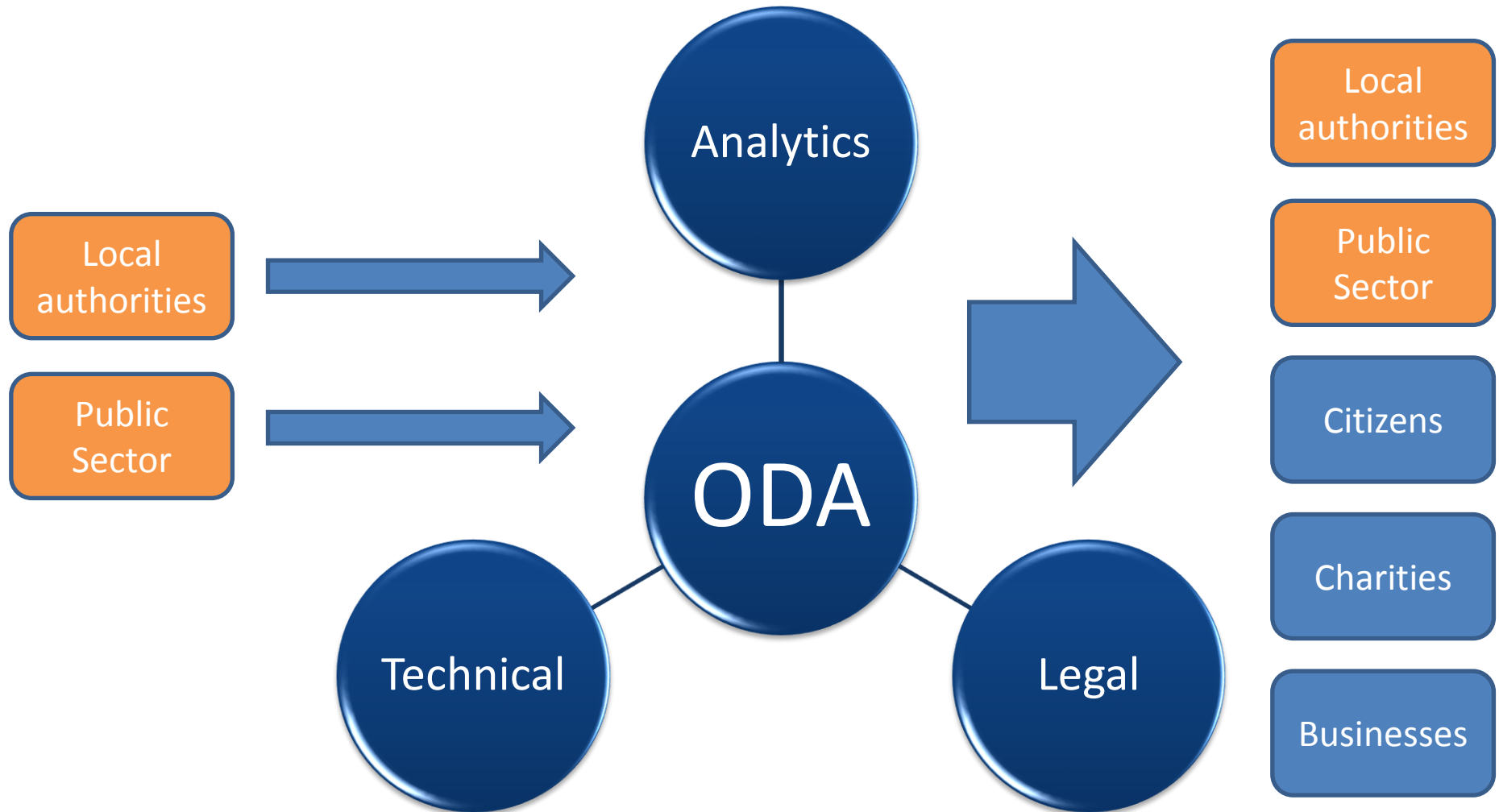
Policy  
Exchange

Why smarter use of technology and data  
are vital to the success of city devolution

Cameron Scott and Eddie Copeland

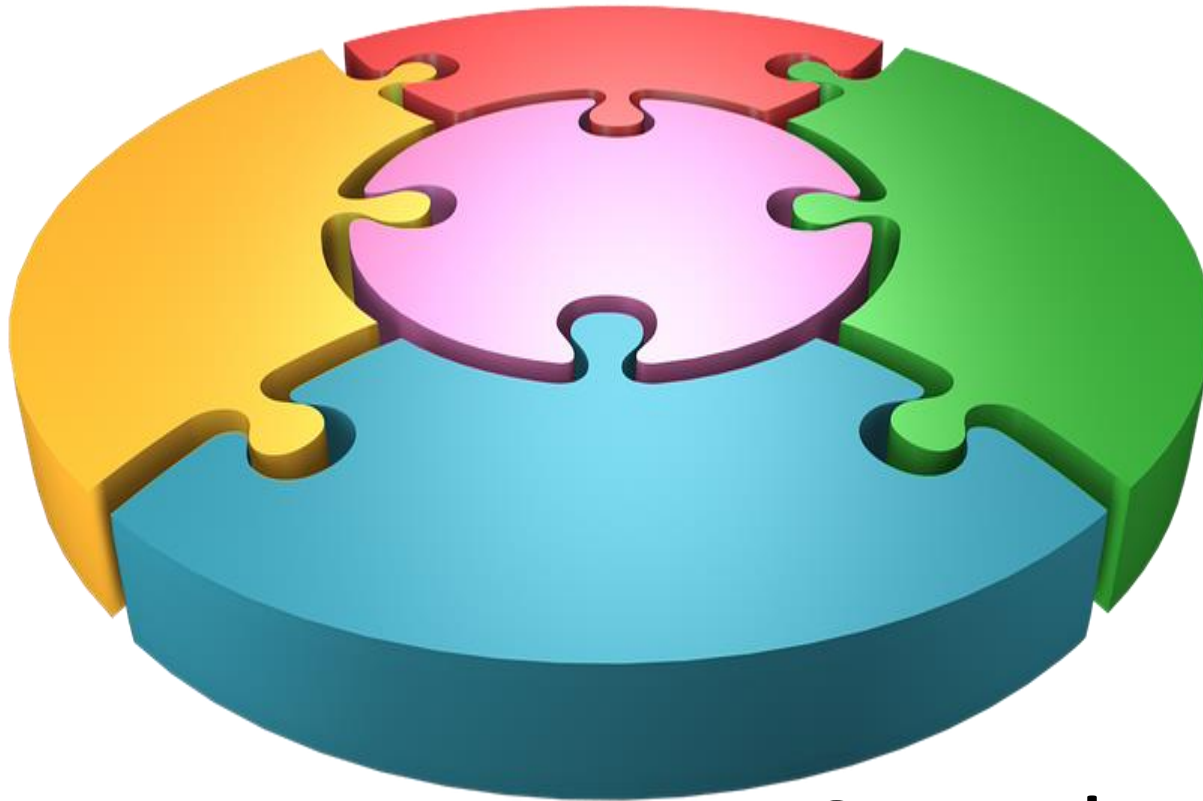


# What's an ODA?





# What would an ODA do?



Complete the  
jigsaw

# What would an ODA do?



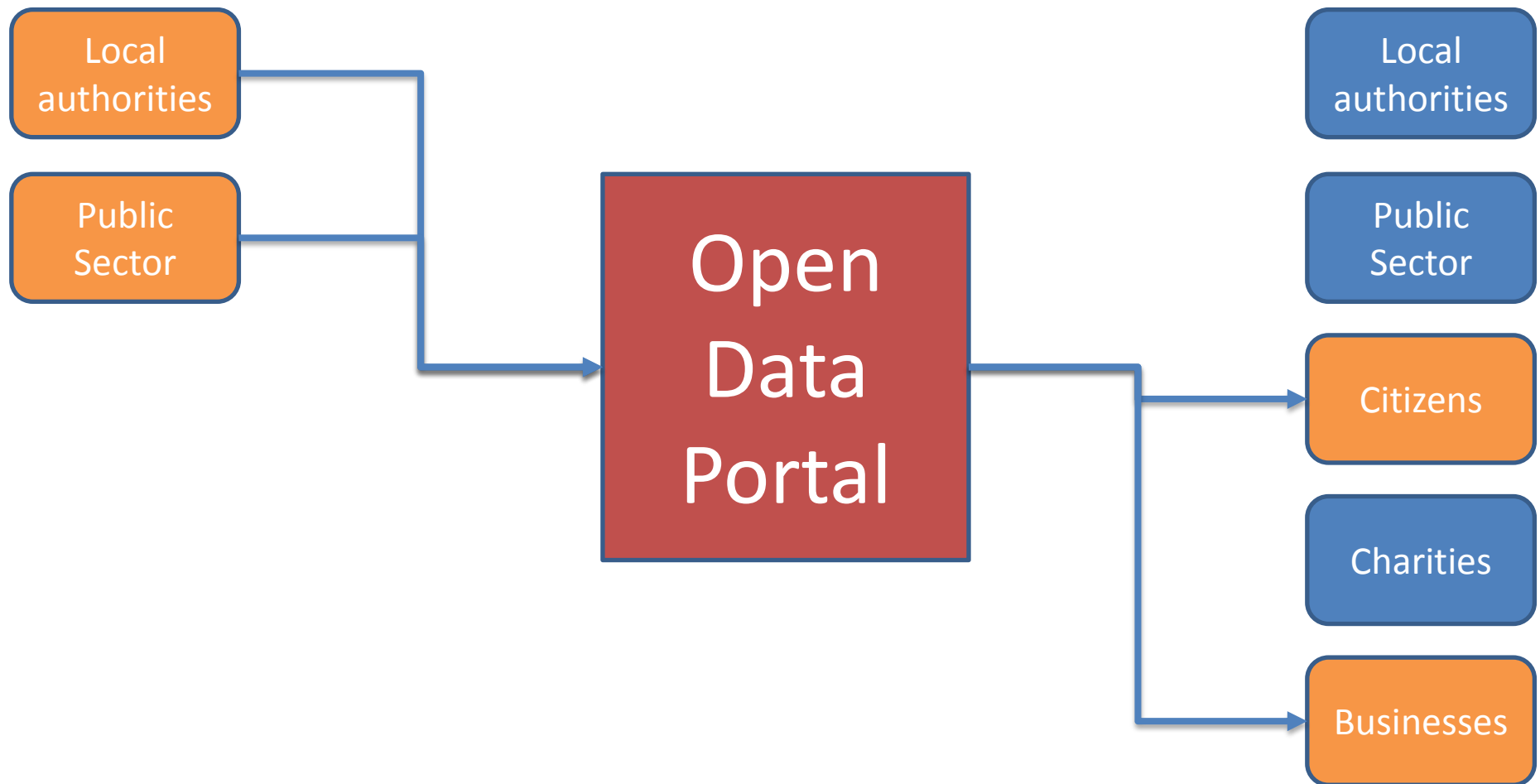
Intelligent coordination

# What would an ODA do?

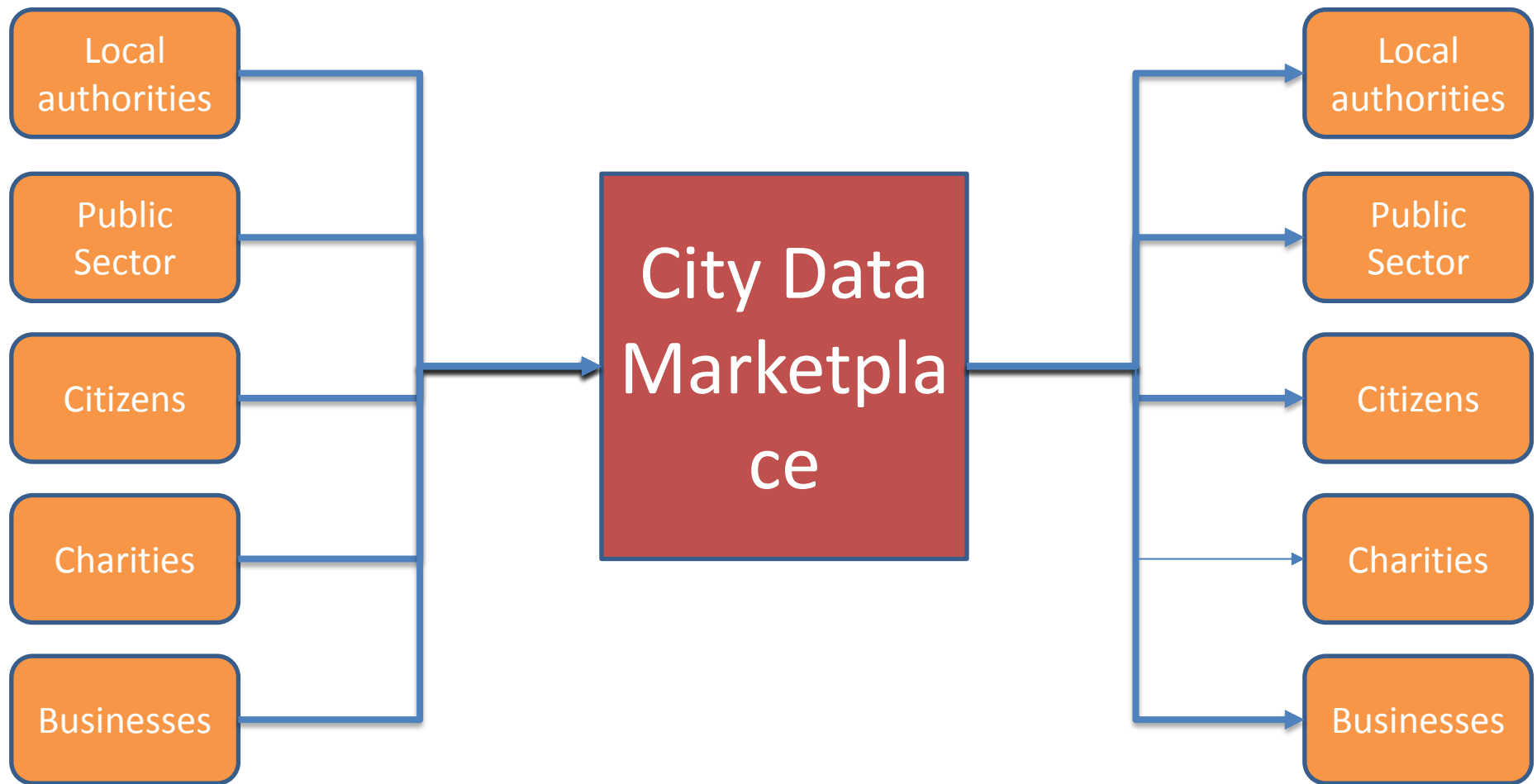


Prediction and  
prevention

# Improve Open Data



# Open Data

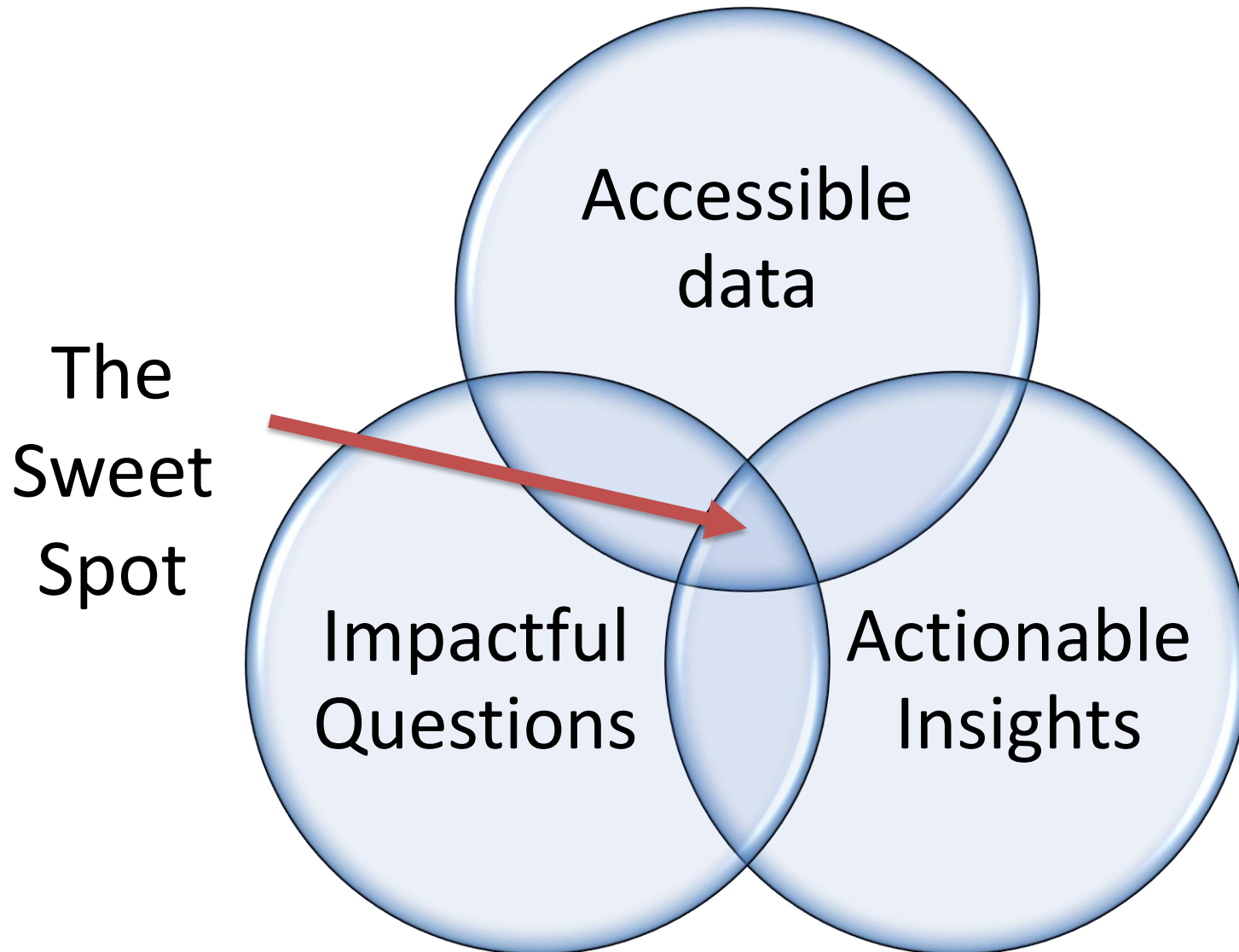




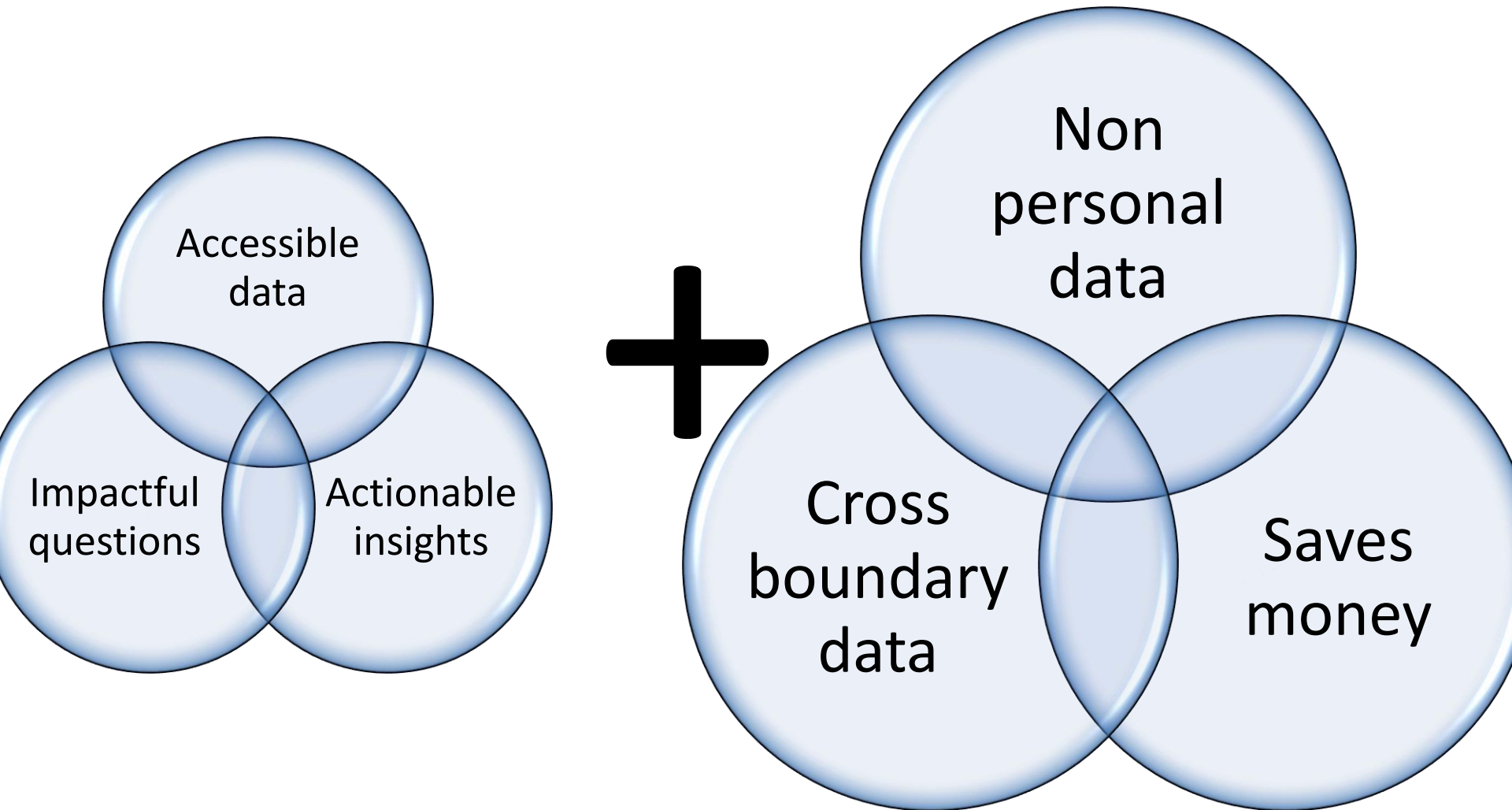
# Pilot: 100 day sprint with 5 boroughs

1. Workshop with boroughs to find problem areas that meet criteria
2. Sign Memorandum of Understanding (MoU)
3. Expert data review – 1 month process
4. Presentation of findings
5. Implement change

# What makes a good data project?



# What would make a good pilot?



# What Nesta brings

- Expertise (and access to external experts) on how the model works
- Convening power to bring together local authorities, public sector bodies, city leaders, central government and subject matter experts (without any partisan agenda)
- Resources to support the design of ODAs and their project management
- Knowledge of how to bid for external funding
- Experience of running pilots and scaling best practice

# Questions

- What do you think?
- Who's interested in taking part in pilot?
- Who from your councils would need to be in the room for second workshop to be able to commit to pilot?
- Do any problem areas already strike you?

# **London**

# **Office of Data Analytics**

@EddieACopeland

**Government Innovation Team**

**Nesta...**





# Data Science Accelerator Programme

- Run by the Government Digital Service, part of Cabinet Office delivering “Digital by Default” strategy



- Backed by ONS and Government Office for Science



- Launched in 2014, this is the 5<sup>th</sup> cohort and runs Mar-June'16

- Aim is to give analysts in Gov the technology, training and support to apply Data Science skills to work-related projects
- Previous projects:
  - Web scraping to estimate CPI data (ONS)
  - machine learning to predict schools most at financial risk (DfE)
  - natural language processing to code free text injury data (HSE)
- This time: beehive health/rail fare prices/Civil Service People Survey...

- GLA were successful in a proposal to investigate changes in Housing Benefit claimants across London
- Origin in a pilot project started by London Councils, GLA and three pilot LBs (Hounslow, Camden and Islington) to look at the mobility of vulnerable people
- Data options:
  - a) DWP Stat-Xplore
  - b) HB flow data request (currently being assessed)
- Broadly speaking 3 aims:
  1. Identify spatial and temporal movements in HB claimants
  2. Model future service demand
  3. Present outputs interactive map of outputs



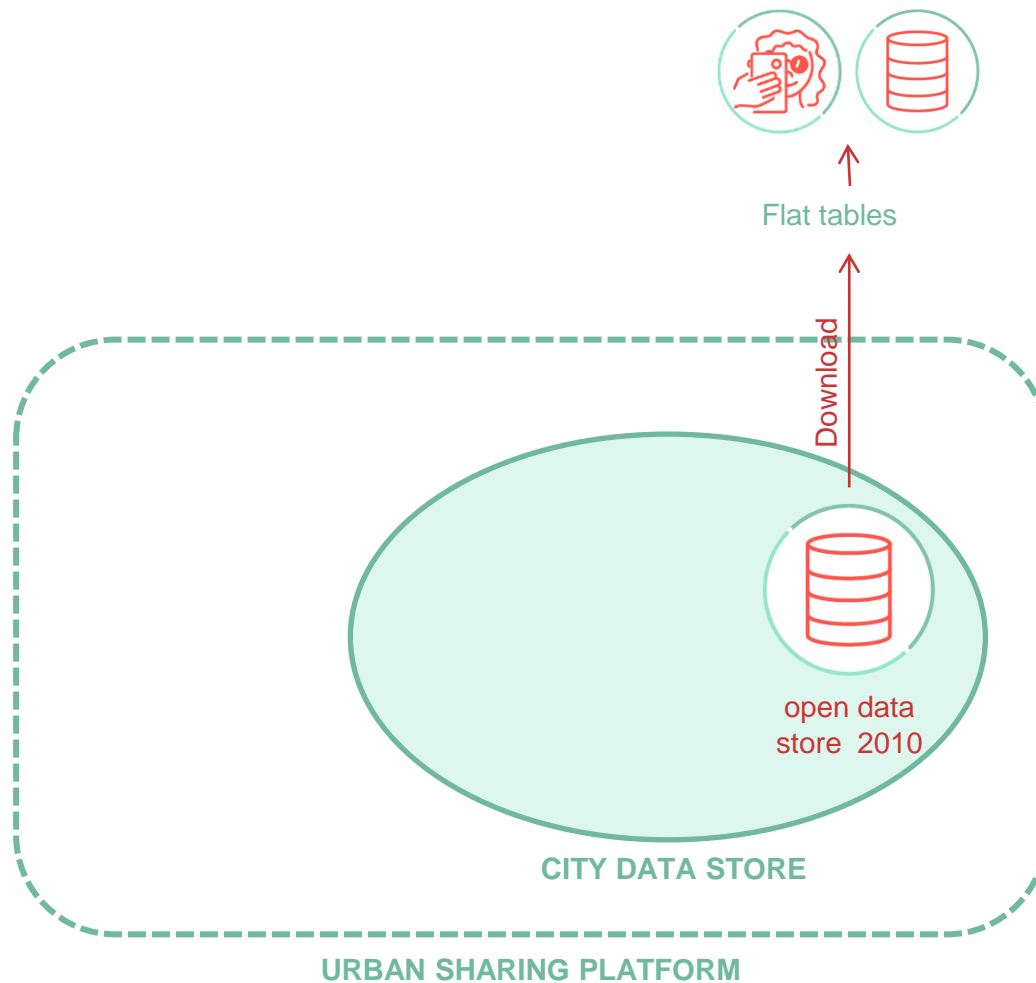
What do you want for a City datastore?

**Aim:**

To establish the user needs when finding and sharing data for use in analysis, in order to feed into the development of the City Datastore.

## Aim:

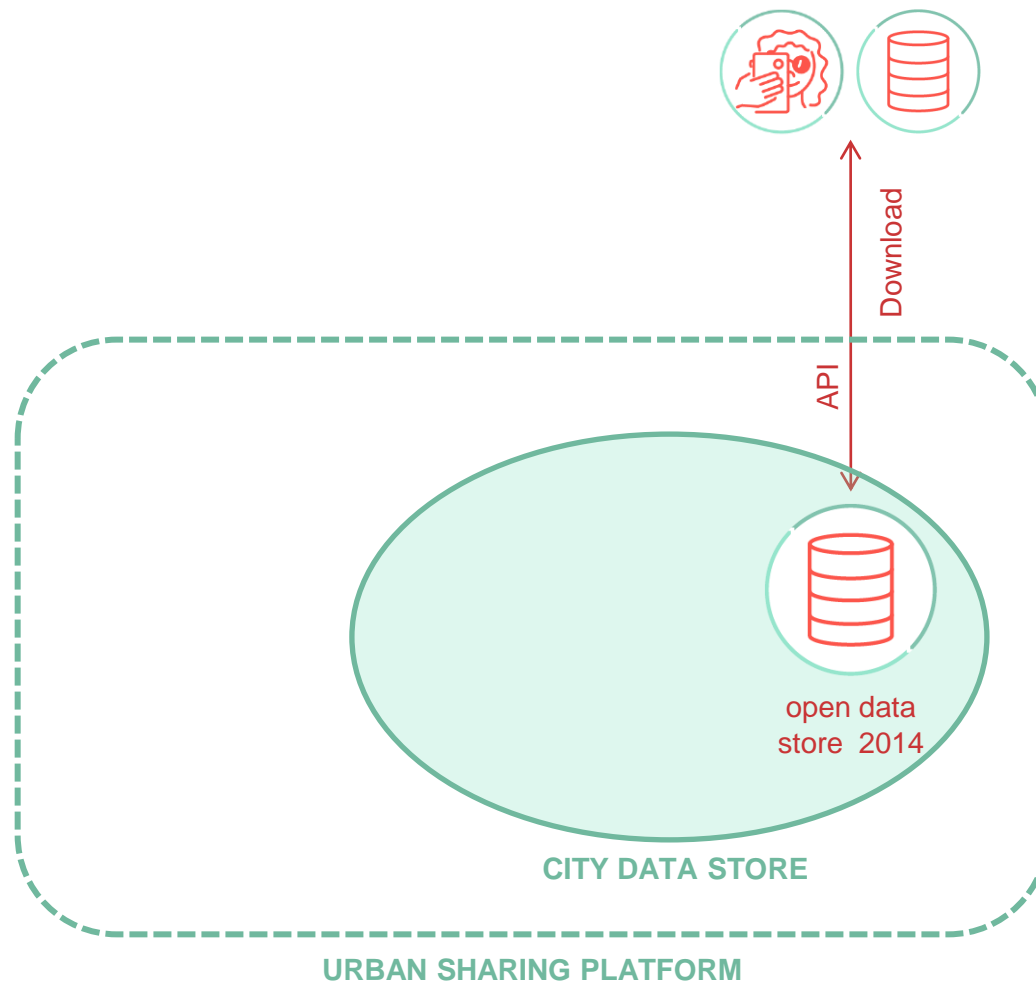
To establish the user needs when finding and sharing data for use in analysis, in order to feed into the development of the City Datastore.





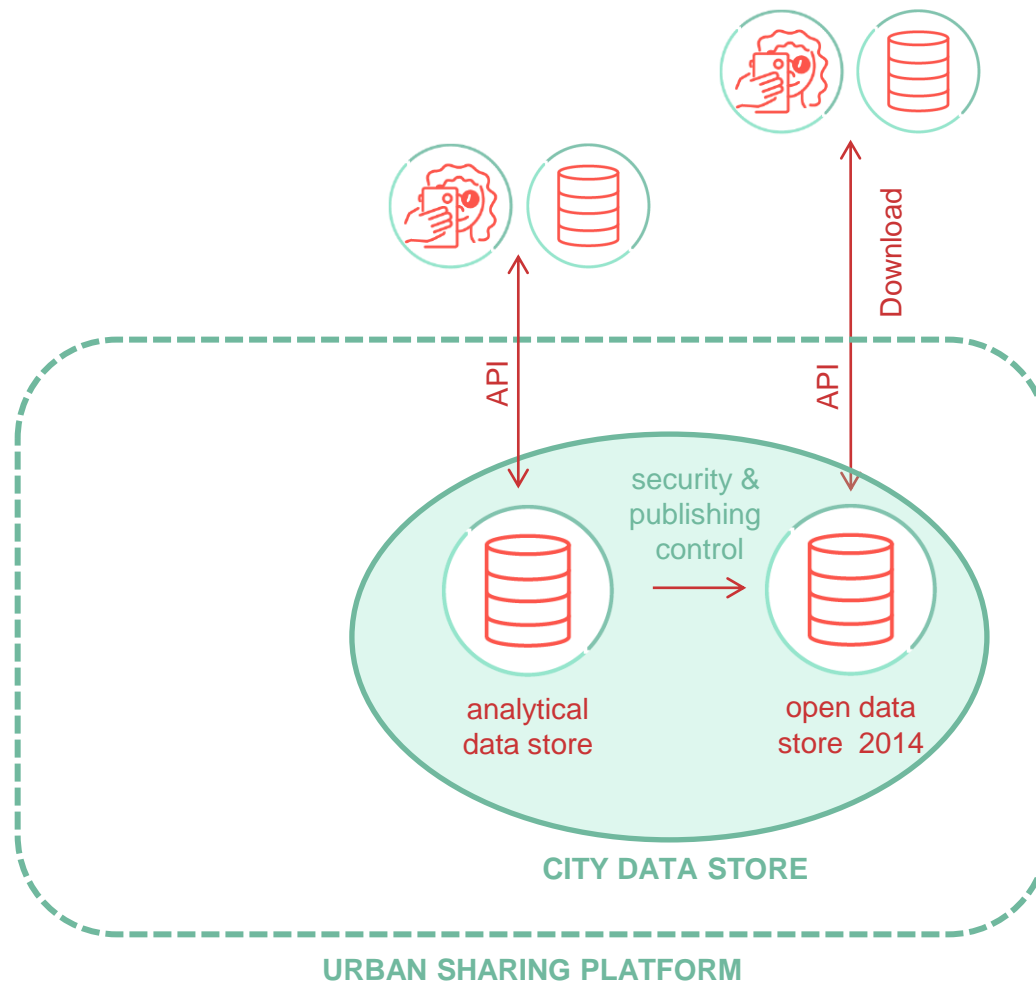
## Aim:

To establish the user needs when finding and sharing data for use in analysis, in order to feed into the development of the City Datastore.



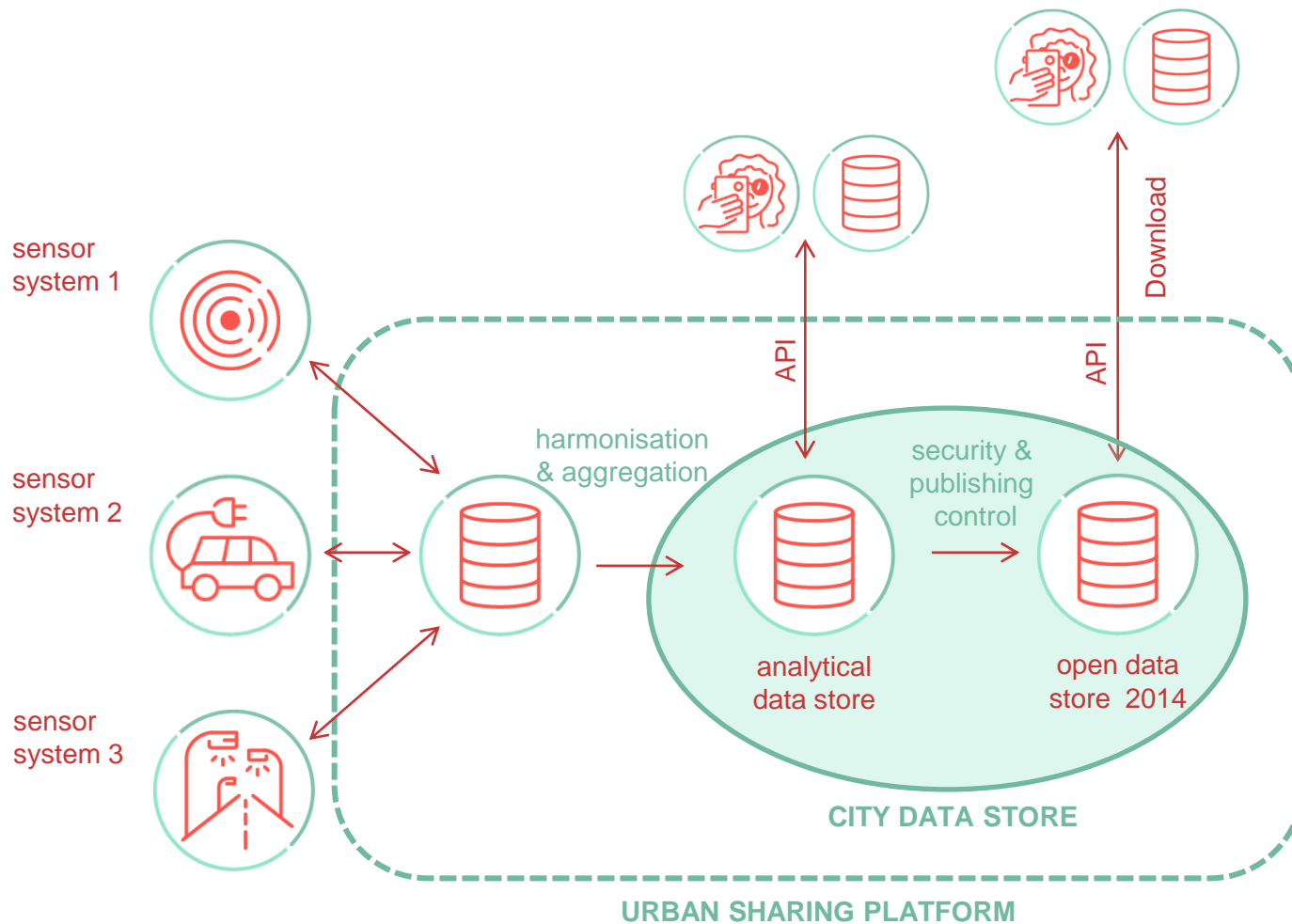
## Aim:

To establish the user needs when finding and sharing data for use in analysis, in order to feed into the development of the City Datastore.



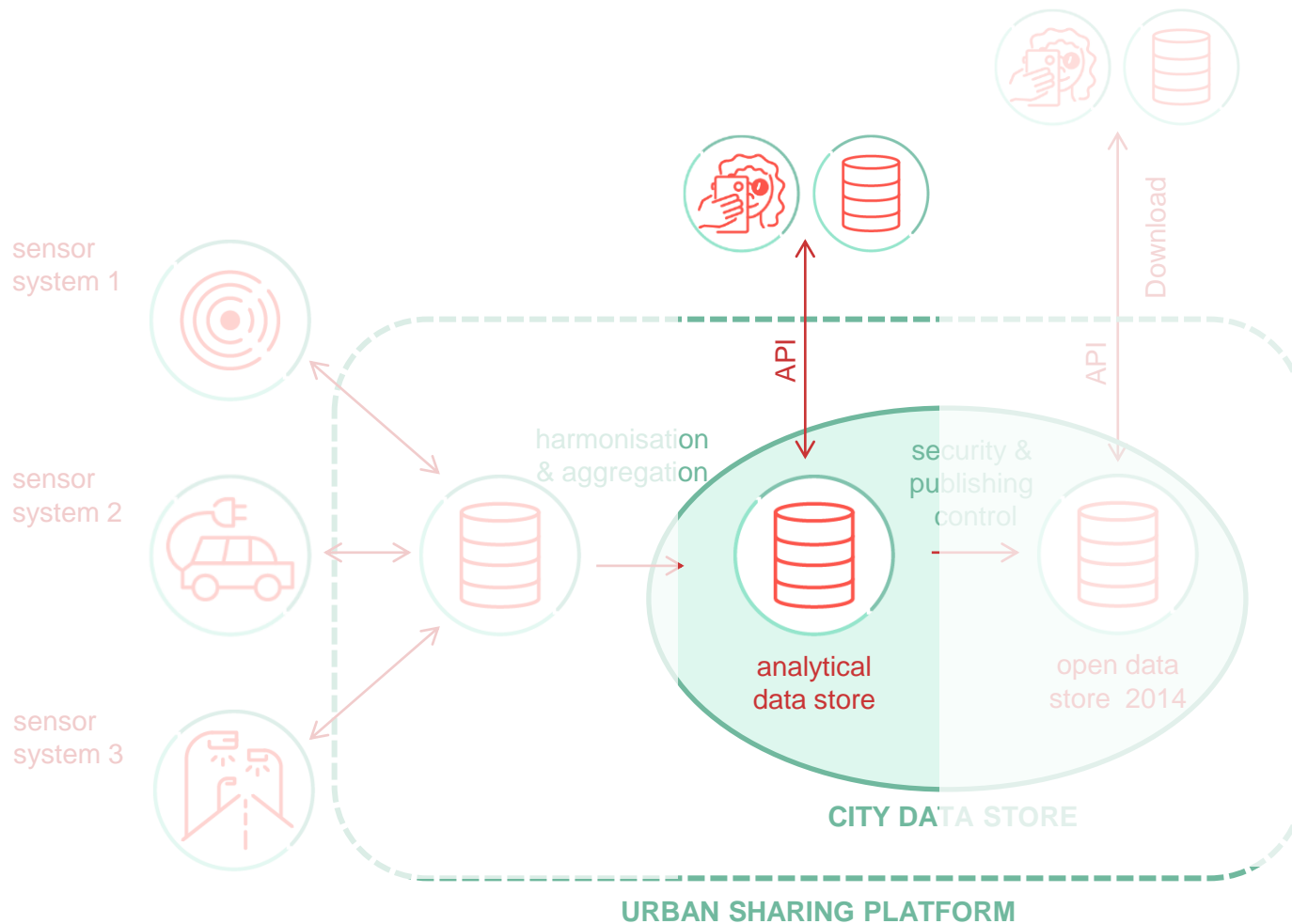
## Aim:

To establish the user needs when finding and sharing data for use in analysis, in order to feed into the development of the City Datastore.



## Aim:

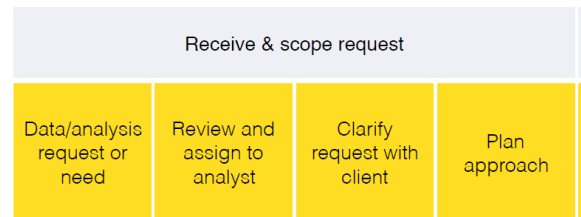
To establish the user needs when finding and sharing data for use in analysis, in order to feed into the development of the City Datastore.



## Aim:

To establish the user needs when finding and sharing data for use in analysis, in order to feed into the development of the City Datastore.

- 1) Describe how you work at the moment (15 mins)
  - By yourself, write down the main individual steps/actions
  - As a table, create a process map of the main steps
  - Where you can, group the individual steps into phases



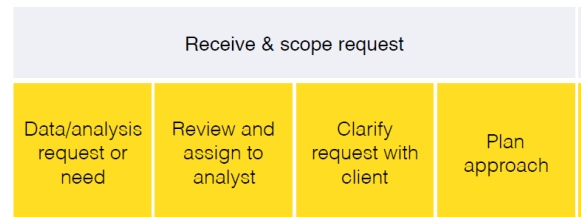
- 2) Identify the issues that you face
  - Annotate the process map with post-its of a different colour
- 3) Discuss ways of tackling these issues
  - Particularly what can be done at a London level
  - Record your suggestions on a flip chart

## Aim:

To establish the user needs when finding and sharing data for use in analysis, in order to feed into the development of the City Datastore.

### 1) Describe how you work at the moment (15 mins)

- By yourself, write down the main individual steps/actions
- As a table, create a process map of the main steps
- Where you can, group the individual steps into phases



### 2) Identify the issues that you face (20 mins)

- Annotate the process map with post-its of a different colour

### 3) Discuss ways of tackling these issues

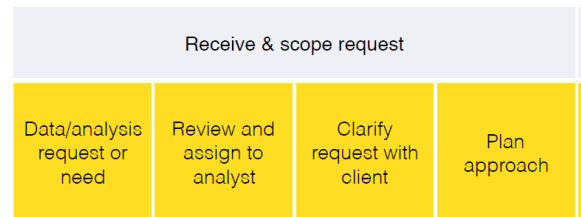
- Particularly what can be done at a London level
- Record your suggestions on a flip chart

## Aim:

To establish the user needs when finding and sharing data for use in analysis, in order to feed into the development of the City Datastore.

### 1) Describe how you work at the moment (15 mins)

- By yourself, write down the main individual steps/actions
- As a table, create a process map of the main steps
- Where you can, group the individual steps into phases



### 2) Identify the issues that you face (20 mins)

- Annotate the process map with post-its of a different colour

### 3) Discuss ways of tackling these issues (15 mins)

- Particularly what can be done at a London level
- Record your suggestions on a flip chart