

'Runnymede 002F' in Englefield Green West

The LSOA is highlighted within the ward (outlined)

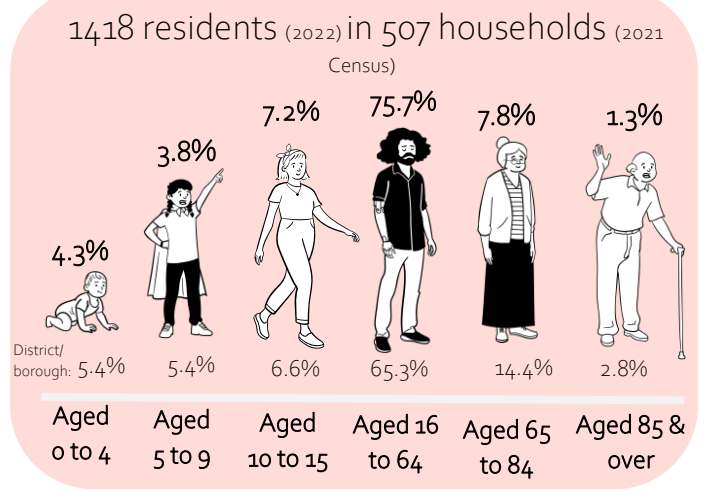
13.0% of residents do not have English as their main language (6.9% Surrey)

Made up of:
11.1% speak English well,
1.9% do not speak English well or cannot speak English (2021 Census)

1.7% Arab (0.4% Surrey).
9.7% Asian (7.7% Surrey).
2.0% Black (1.7% Surrey).
3.9% Mixed (3.4% Surrey).
67.7% White British (76.6% Surrey).
% White non-British (% Surrey).
1.8% Other ethnic group (2021 Census) (1.3% Surrey).

0.7% Buddhist (0.6% Surrey).
37.2% Christian (50.1% Surrey).
2.1% Hindu (2.0% Surrey).
0.0% Jewish (0.0% Surrey).
7.3% Muslim (3.2% Surrey).
0.3% Sikh (0.6% Surrey).
0.6% Other (0.5% Surrey).
44.1% No religious belief (2021 Census) (36.6% Surrey).

25.0% households include dependent children (127 households)
39.4% of which have only one parent in the household (2021 Census)



Of all residents, 4.8% UK resident for less than 2 years (3.0% D/B, 1.9% Surrey, 1.9% England) (2021 Census)

79.4% Straight / Heterosexual (90.7% Surrey).
2.2% Gay or Lesbian (1.2% Surrey).
4.7% Bisexual (1.1% Surrey).
0.9% Other sexual orientation (0.3% Surrey).
as a % of aged 16 and over (2021 Census*)

99.1% of respondents' gender identity is the same as sex identified at birth (cis) (99.6% Surrey), 0.1% trans women, 0.2% trans men, 0.5% all other gender identities.
10.5% did not respond to the gender identity question.

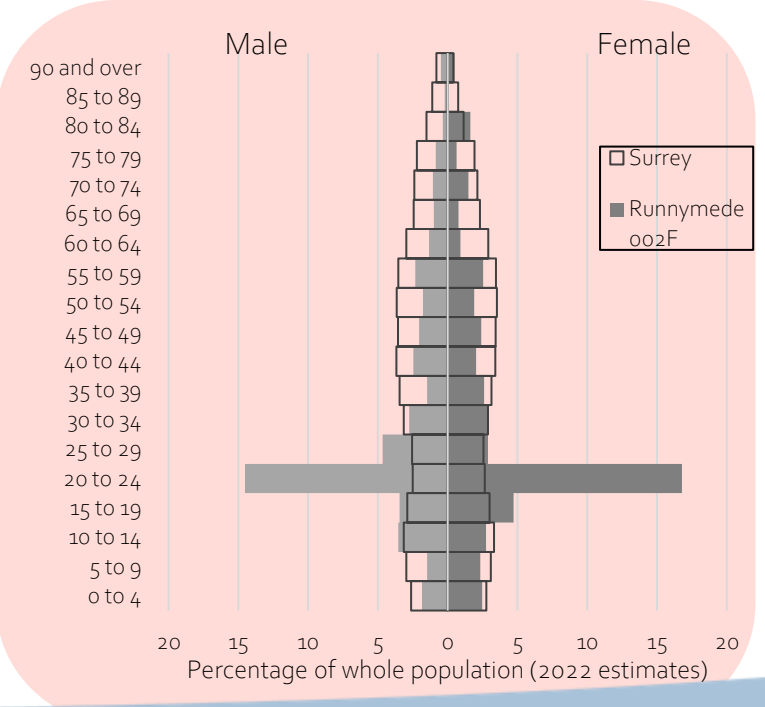
147 residents live alone (28.9% of all households) (27.1% Surrey) (2021 Census)

145 retired residents, 11.8% of 16 and over (21.7% Surrey)

14.3% residents do not hold a passport (8.2% D/B, 7.6% Surrey, 13.2% England) (2021 Census)

20.0% disabled under the Equality Act (made up of 7.1% day-to-day activity limited 'a lot' and 12.8% limited 'a little'). Plus 7.0% not disabled under Equality Act but have long-term physical or mental health conditions (2021 Census)
Personal Independence Payment (PIP) for 6.2% of residents aged 65 and under (Oct-22). Attendance Allowance for 20.3% of over 65s (Aug-22).

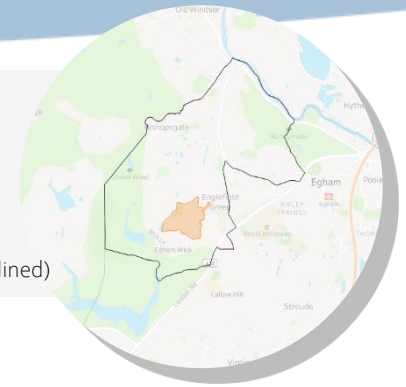
6.9% of residents provide unpaid care (7.9% D/B) (2021 Census)
3.4% of residents provide 35 hours or over a week (3.0% D/B)



'D/B' = District/Borough. This neighbourhood is in Runnymede.

'Runnymede 002F' in Englefield Green West

The LSOA is highlighted within the ward (outlined)



Index of Multiple Deprivation (IMD, 2019) ranks *within Surrey* (out of 709): *1st = most 'deprived'*

11th Overall Deprivation.
 56th Income.
 155th Employment.
 1st Education, Skills & Training.
 6th Health & Disability.
 69th Crime.
 19th Barriers to Housing & Services.
 519th Living Environment.

36.9% households were not classified as deprived in any dimension (employment, education, housing, or health) (53.0% in D/B, 57.1% Surrey). (2021 Census)

5.3% of households deprived in three dimensions.

23.1% of all children are in absolute low-income families (7.0% in D/B, 6.9% in Surrey, 15.6% in England)
 62.2% of which are in lone parent families.
 36.5% of which are in out of work families. (2023)

Youth unemployment: 3.9% of 18-24s are in receipt of Universal Credit or Jobseeker's Allowance (2.0% in D/B, 2.70.0% Surrey)

Adult unemployment: 4.2% of all adults are in receipt of UC or JSA (2.0% in D/B, 2.2% Surrey) (May 2024)

31.3% pensioners are in poverty (7.0% in D/B, 6.1% in Surrey) (Nov 2023)

19.1% of households were in fuel poverty in 2022, which is likely to have risen considerably (8.0% in D/B)

1.2% of households are without central heating (1.0% D/B, 1.0% Surrey) (2021 Census)

Sectors with the most local jobs (2022)
 33.3% transport and storage (inc postal),
 33.3% education

18.6% adults have no qualifications (14.5% D/B, 12.9% Surrey, 18.1% England) (2021 Census)

11.2% households are 'overcrowded' (6.0% D/B, 6.0% Surrey) & 6.7% of households have overcrowded bedrooms (2021 Census)

19.7% of housing is owner-occupied (68.0% in D/B, 71.7% Surrey).
 46.3% of housing is social rented (13.0% in D/B, 11.4% Surrey).
 32.5% is private rented – private landlord or letting agency (17.0% in D/B, 14.9% Surrey). (2021 Census)

0.00% of residents live in communal establishments (i.e. prisons, care homes, hospitals, hotels, university halls, religious establishments)
 (4.0% in D/B, 2.3% Surrey) (2021 Census)

29.7% of households do not have access to a vehicle (14.0% D/B, 11.7% Surrey) (2021 Census)

52% lower carbon footprint per person than the D/B average (37% lower than England) (2021)

12.4% households not connected to the gas network (17.0% in D/B) (2022)

8.7% land = residential,
 24.3% land = residential gardens,

0.1% land = community buildings,

9.6% land = outdoor recreation,

24.7% of land = forest, open land, & water. (2022)

Occupations of residents (2021 Census)
 5.5% higher managerial, admin. & prof. (15.9% D/B, 20.2% Surrey),
 9.8% lower managerial, admin. & prof. (21.5% D/B, 23.6% Surrey),
 5.8% intermediate (11.6% D/B, 12.2% Surrey),
 7.0% small employers and own account workers (10.9% D/B, 11.9% Surrey),
 3.7% lower supervisory and technical (4.4% D/B, 4.1% Surrey),
 10.3% semi-routine (8.7% D/B, 8.4% Surrey),
 11.7% routine (7.8% D/B, 6.8% Surrey).

126.2 overall crime offences per 1,000 people (116.0 in D/B, 100.9 in Surrey, 131.3 in England)
 21.9 anti-social behaviour (18.0 in D/B)
 5.9 burglary (9.0 in D/B)
 44.4 violent crime and sexual offences (39.0 in D/B)
 0.7 robbery (0.0 in D/B)
 6.3 vehicle crime (9.0 in D/B)
 12.0 criminal damage (9.0 in D/B)
 8.5 drug crime (5.0 in D/B) (Mar-2023 to Feb-2024)

Estimated disease prevalence (2022/23)
 11.7% high blood pressure (13.1% D/B, 13.5% Surrey)
 11.4% depression (12.7% D/B, 11.9% Surrey)
 6.8% obesity (9.9% D/B, 8.8% Surrey)
 4.7% diabetes (6.2% D/B, 6.0% Surrey)
 4.6% asthma (5.2% D/B, 5.8% Surrey)

'D/B' = District/Borough. This neighbourhood is in Runnymede.

Visit the [Surrey-i website](https://www.surrey-i.com) to make sure you have the most recent version of this infographic or email us at: surreyi.helpdesk@surreycc.gov.uk