



'Spelthorne 001C' in Stanwell North (1 of 2 LSOAs)

The LSOA is highlighted within the ward (outlined)

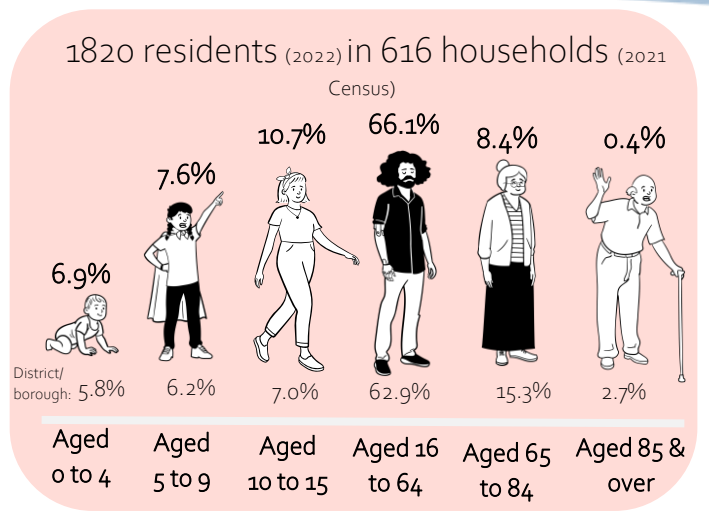
18.4% of residents do not have English as their main language (6.9% Surrey)

Made up of:
15.8% speak English well, 2.6% do not speak English well or cannot speak English (2021 Census)

0.7% Arab (0.4% Surrey).
20.3% Asian (7.7% Surrey).
5.6% Black (1.7% Surrey).
2.9% Mixed (3.4% Surrey).
55.3% White British (76.6% Surrey).
% White non-British (% Surrey).
2.8% Other ethnic group (1.3% Surrey)

1.9% Buddhist (0.6% Surrey).
46.7% Christian (50.1% Surrey).
5.8% Hindu (2.0% Surrey).
0.0 Jewish (0.0 Surrey).
6.8% Muslim (3.2% Surrey).
5.9% Sikh (0.6% Surrey).
1.1% Other (0.5% Surrey).
28.0% No religious belief (36.6% Surrey)

43.4% households include dependent children (267 households)
27.3% of which have only one parent in the household (2021 Census)



Of all residents, 2.4% UK resident for less than 2 years (1.7% D/B, 1.9% Surrey, 1.9% England) (2021 Census)

90.2% Straight / Heterosexual (90.7% Surrey).
1.7% Gay or Lesbian (1.2% Surrey).
0.9% Bisexual (1.1% Surrey).
0.4% Other sexual orientation (0.3% Surrey).
as a % of aged 16 and over (2021 Census*)

99.1% of respondents' gender identity is the same as sex identified at birth (cis) (99.6% Surrey), 0.2% trans women, 0.2% trans men, 0.0% all other gender identities.
6.0% did not respond to the gender identity question.

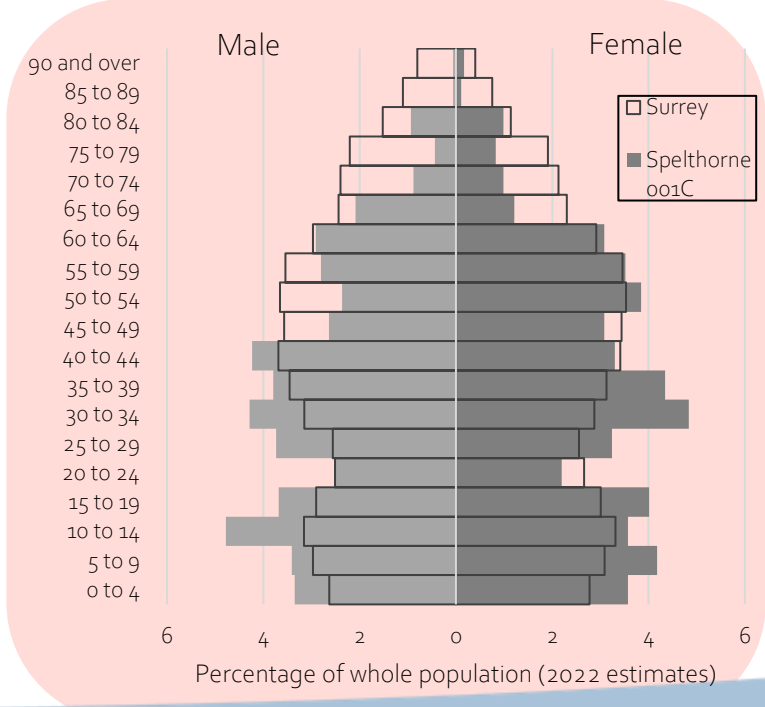
120 residents live alone (19.5% of all households) (27.1% Surrey) (2021 Census)

156 retired residents, 11.3% of 16 and over (21.7% Surrey)

11.9% residents do not hold a passport (8.3% D/B, 7.6% Surrey, 13.2% England) (2021 Census)

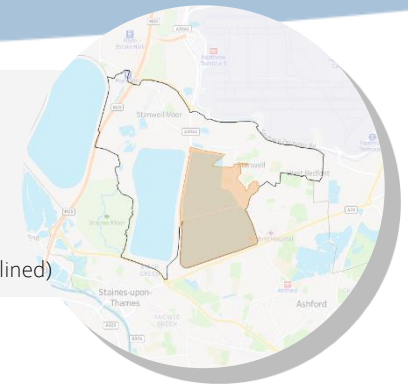
14.5% disabled under the Equality Act (made up of 5.8% day-to-day activity limited 'a lot' and 8.7% limited 'a little'). Plus 6.6% not disabled under Equality Act but have long-term physical or mental health conditions (2021 Census)
Personal Independence Payment (PIP) for 7.6% of residents aged 65 and under (Oct-22). Attendance Allowance for 10.1% of over 65s (Aug-22).

9.6% of residents provide unpaid care (8.5% D/B) (2021 Census)
3.9% of residents provide 35 hours or over a week (3.2% D/B)



'D/B' = District/Borough. This neighbourhood is in Spelthorne.

'Spelthorne 001C' in Stanwell North (1 of 2 LSOAs)



The LSOA is highlighted within the ward (outlined)

Index of Multiple Deprivation (IMD, 2019) ranks *within Surrey* (out of 709): *1st = most 'deprived'*

- 15th Overall Deprivation.
- 16th Income.
- 41st Employment.
- 21st Education, Skills & Training.
- 90th Health & Disability.
- 1st Crime.
- 282nd Barriers to Housing & Services.
- 172nd Living Environment.

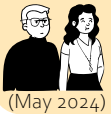
38.2% households were not classified as deprived in any dimension (employment, education, housing, or health) (51.0% in D/B, 57.1% Surrey). (2021 Census)

4.9% of households deprived in three dimensions.

17.3% of all children are in absolute low-income families (9.0% in D/B, 6.9% in Surrey, 15.6% in England)
69.8% of which are in lone parent families.
31.3% of which are in out of work families. (2023)



Youth unemployment: 3.8% of 18-24s are in receipt of Universal Credit or Jobseeker's Allowance (5.0% in D/B, 2.70.0% Surrey)



Adult unemployment: 5.0% of all adults are in receipt of UC or JSA (3.0% in D/B, 2.2% Surrey) (May 2024)

18.2% pensioners are in poverty (8.0% in D/B, 6.1% in Surrey) (Nov 2023)



9.3% of households were in fuel poverty in 2022, which is likely to have risen considerably (8.0% in D/B)

1.0% of households are without central heating (1.0% D/B, 1.0% Surrey) (2021 Census)

Sectors with the most local jobs (2022)

23.3% transport and storage (inc postal),
16.7% construction



24.4% adults have no qualifications (16.8% D/B, 12.9% Surrey, 18.1% England)



(2021 Census)

13.8% households are 'overcrowded' (7.0% D/B, 7.0% Surrey) & 11.2% of households have overcrowded bedrooms (2021 Census)



47.6% of housing is owner-occupied (69.0% in D/B, 71.7% Surrey).
37.9% of housing is social rented (13.0% in D/B, 11.4% Surrey).
13.8% is private rented – private landlord or letting agency (16.0% in D/B, 14.9% Surrey). (2021 Census)



0.00% of residents live in communal establishments (i.e. prisons, care homes, hospitals, hotels, university halls, religious establishments) (1.0% in D/B, 2.3% Surrey) (2021 Census)



15.7% of households do not have access to a vehicle (15.0% D/B, 11.7% Surrey) (2021 Census)

32% lower carbon footprint per person than the D/B average (8% lower than England) (2021)



2.1% households not connected to the gas network (13.0% in D/B) (2022)

1.5% land = residential,



3.5% land = residential gardens,

0.6% land = community buildings,



0.7% land = outdoor recreation,



81.4% of land = forest, open land, & water.



(2022)

Occupations of residents (2021 Census)

6.9% higher managerial, admin. & prof. (14.6% D/B, 20.2% Surrey),
16.0% lower managerial, admin. & prof. (22.8% D/B, 23.6% Surrey),
14.4% intermediate (14.9% D/B, 12.2% Surrey),
9.4% small employers and own account workers (11.0% D/B, 11.9% Surrey)
6.7% lower supervisory and technical (5.7% D/B, 4.1% Surrey),
13.0% semi-routine (9.9% D/B, 8.4% Surrey),
17.2% routine (9.4% D/B, 6.8% Surrey).



219.8 overall crime offences per 1,000 people (128.0 in D/B, 100.9 in Surrey, 131.3 in England)



37.9 anti-social behaviour (21.0 in D/B)

14.6 burglary (12.0 in D/B)

86.8 violent crime and sexual offences (42.0 in D/B)

0.5 robbery (1.0 in D/B)

7.7 vehicle crime (12.0 in D/B)

(Mar-2023 to Feb-2024)



32.4 criminal damage (11.0 in D/B)

11.5 drug crime (4.0 in D/B)

Estimated disease prevalence (2022/23)

13.5% high blood pressure (14.8% D/B, 13.5% Surrey)

9.3% depression (11.9% D/B, 11.9% Surrey)

13.3% obesity (11.2% D/B, 8.8% Surrey)

8.8% diabetes (7.5% D/B, 6.0% Surrey)

4.9% asthma (5.3% D/B, 5.8% Surrey)



'D/B' = District/Borough. This neighbourhood is in Spelthorne.

Visit the [Surrey-i website](https://www.surrey-i.org.uk) to make sure you have the most recent version of this infographic or email us at: surreyi.helpdesk@surreycc.gov.uk